



FNBP4 Polyclonal Antibody

Catalog No	YP-Ab-05591
Isotype	IgG
Reactivity	Human;Mouse
Applications	WB;ELISA
Gene Name	FNBP4 FBP30 KIAA1014
Protein Name	Formin-binding protein 4 (Formin-binding protein 30)
Immunogen	Synthesized peptide derived from part region of human protein
Specificity	FNBP4 Polyclonal Antibody detects endogenous levels of protein.
Formulation	Liquid in PBS containing 50% glycerol, and 0.02% sodium azide.
Source	Polyclonal, Rabbit,IgG
Purification	The antibody was affinity-purified from rabbit antiserum by affinity-chromatography using epitope-specific immunogen.
Dilution	WB 1:500-2000 ELISA 1:5000-20000
Concentration	1 mg/ml
Purity	≥90%
Storage Stability	-20°C/1 year
Synonyms	
Observed Band	111kD
Cell Pathway	nucleoplasm,
Tissue Specificity	Highly expressed in the eye.
Function	domain:These WW domains interact with Arg/Gly-rich-flanked Pro-rich domains found in several WW domain-binding proteins (WBPs). The N-terminal WW domain has the greater ligand-binding ability.,PTM:Phosphorylated upon DNA damage, probably by ATM or ATR.,similarity:Contains 2 WW domains.,subunit:Binds FMN1. Interacts with the Arg/Gly-rich-flanked Pro-rich of KHDRBS1/SAM68. Arginine methylation in these regions has no effect on this binding.,
Background	domain:These WW domains interact with Arg/Gly-rich-flanked Pro-rich domains found in several WW domain-binding proteins (WBPs). The N-terminal WW domain has the greater ligand-binding ability.,PTM:Phosphorylated upon DNA damage, probably by ATM or ATR.,similarity:Contains 2 WW domains.,subunit:Binds FMN1. Interacts with the Arg/Gly-rich-flanked Pro-rich of KHDRBS1/SAM68. Arginine methylation in these regions has no effect on this binding.,



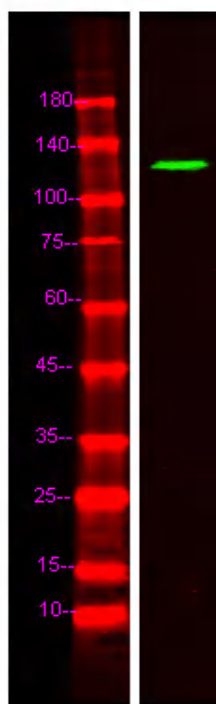
matters needing attention

Avoid repeated freezing and thawing!

Usage suggestions

This product can be used in immunological reaction related experiments. For more information, please consult technical personnel.

Products Images



Western Blot analysis of Hela lysis, using primary antibody at 1:1000 dilution. Secondary antibody(catalog#:RS23920) was diluted at 1:10000