



# REM1 Polyclonal Antibody

<b>Catalog No</b>	YP-Ab-05619
<b>Isotype</b>	IgG
<b>Reactivity</b>	Human;Mouse
<b>Applications</b>	WB;ELISA
<b>Gene Name</b>	REM1 GES REM
<b>Protein Name</b>	GTP-binding protein REM 1 (GTPase-regulating endothelial cell sprouting) (Rad and Gem-like GTP-binding protein 1)
<b>Immunogen</b>	Synthesized peptide derived from part region of human protein
<b>Specificity</b>	REM1 Polyclonal Antibody detects endogenous levels of protein.
<b>Formulation</b>	Liquid in PBS containing 50% glycerol, and 0.02% sodium azide.
<b>Source</b>	Polyclonal, Rabbit,IgG
<b>Purification</b>	The antibody was affinity-purified from rabbit antiserum by affinity-chromatography using epitope-specific immunogen.
<b>Dilution</b>	WB 1:500-2000 ELISA 1:5000-20000
<b>Concentration</b>	1 mg/ml
<b>Purity</b>	≥90%
<b>Storage Stability</b>	-20°C/1 year
<b>Synonyms</b>	
<b>Observed Band</b>	32kD
<b>Cell Pathway</b>	intracellular,membrane,
<b>Tissue Specificity</b>	Most highly expressed in the endothelial lining of the blood vessels in uterus and heart. Lower levels found in spleen, lymph node, kidney and testis. Also found in cells with secretory function such as the islets of Langerhans, lobule/duct epithelium in the breast, bile duct epithelium in the liver, surface epithelium in the endometrial glands of the uterus, colon mucosa and acinar cells in the pancreas and the prostate.
<b>Function</b>	function:Promotes endothelial cell sprouting and actin cytoskeletal reorganization. May be involved in angiogenesis. May function in Ca(2+) signaling.,similarity:Belongs to the small GTPase superfamily. RGK family.,subunit:In vitro, interacts with calmodulin in a calcium-dependent manner.,tissue specificity:Most highly expressed in the endothelial lining of the blood vessels in uterus and heart. Lower levels found in spleen, lymph node, kidney and testis. Also found in cells with secretory function such as the islets of Langerhans, lobule/duct epithelium in the breast, bile duct epithelium in the liver, surface epithelium in the endometrial glands of the uterus, colon mucosa and acinar cells in the pancreas and the prostate.,



**Background**

The protein encoded by this gene is a GTPase and member of the RAS-like GTP-binding protein family. The encoded protein is expressed in endothelial cells, where it promotes reorganization of the actin cytoskeleton and morphological changes in the cells. [provided by RefSeq, Jul 2008],

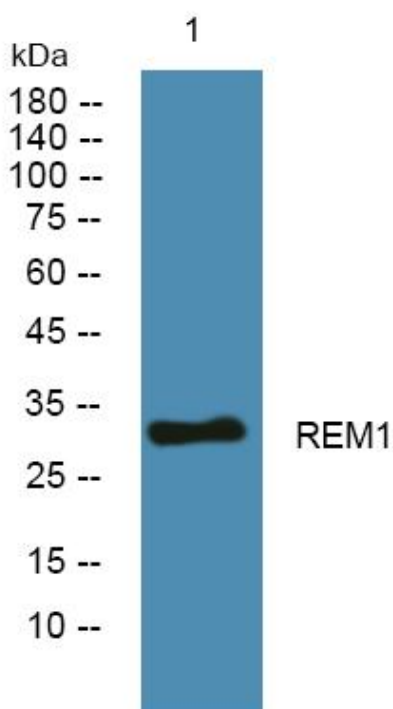
**matters needing attention**

Avoid repeated freezing and thawing!

**Usage suggestions**

This product can be used in immunological reaction related experiments. For more information, please consult technical personnel.

**Products Images**



Western blot analysis of lysates from PC12 cells, primary antibody was diluted at 1:1000, 4° over night