

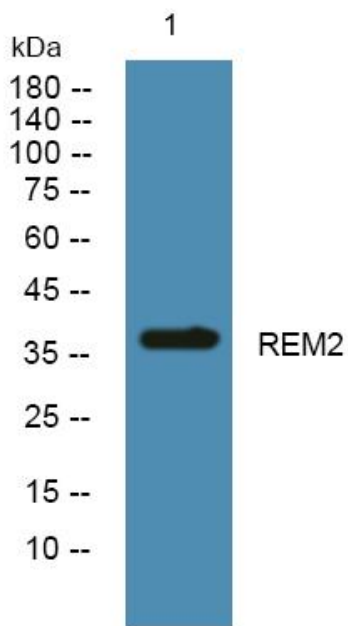


REM2 Polyclonal Antibody

Catalog No	YP-Ab-05620
Isotype	IgG
Reactivity	Human;Rat;Mouse
Applications	WB;ELISA
Gene Name	REM2
Protein Name	GTP-binding protein REM 2 (Rad and Gem-like GTP-binding protein 2)
Immunogen	Synthesized peptide derived from part region of human protein
Specificity	REM2 Polyclonal Antibody detects endogenous levels of protein.
Formulation	Liquid in PBS containing 50% glycerol, and 0.02% sodium azide.
Source	Polyclonal, Rabbit,IgG
Purification	The antibody was affinity-purified from rabbit antiserum by affinity-chromatography using epitope-specific immunogen.
Dilution	WB 1:500-2000 ELISA 1:5000-20000
Concentration	1 mg/ml
Purity	≥90%
Storage Stability	-20°C/1 year
Synonyms	
Observed Band	37kD
Cell Pathway	Cell membrane .
Tissue Specificity	Ovary,
Function	caution:It is uncertain whether Met-1 or Met-59 is the initiator.,function:Binds GTP saturably and exhibits a low intrinsic rate of GTP hydrolysis.,similarity:Belongs to the small GTPase superfamily. RGK family.,
Background	caution:It is uncertain whether Met-1 or Met-59 is the initiator.,function:Binds GTP saturably and exhibits a low intrinsic rate of GTP hydrolysis.,similarity:Belongs to the small GTPase superfamily. RGK family.,
matters needing attention	Avoid repeated freezing and thawing!
Usage suggestions	This product can be used in immunological reaction related experiments. For more information, please consult technical personnel.



Products Images



Western blot analysis of lysates from A431 cells,
primary antibody was diluted at 1:1000, 4° over night