



# RIT2 Polyclonal Antibody

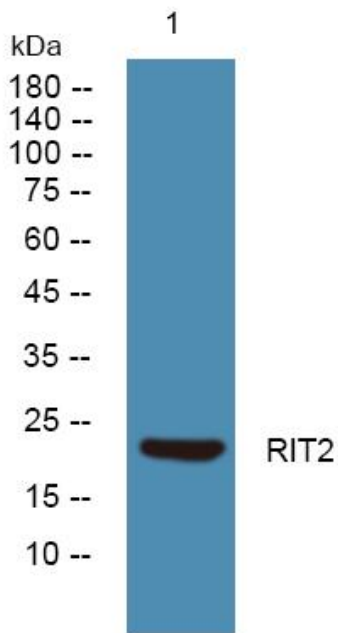
<b>Catalog No</b>	YP-Ab-05621
<b>Isotype</b>	IgG
<b>Reactivity</b>	Human;Rat;Mouse
<b>Applications</b>	WB;ELISA
<b>Gene Name</b>	RIT2 RIN ROC2
<b>Protein Name</b>	GTP-binding protein Rit2 (Ras-like protein expressed in neurons) (Ras-like without CAAX protein 2)
<b>Immunogen</b>	Synthesized peptide derived from part region of human protein
<b>Specificity</b>	RIT2 Polyclonal Antibody detects endogenous levels of protein.
<b>Formulation</b>	Liquid in PBS containing 50% glycerol, and 0.02% sodium azide.
<b>Source</b>	Polyclonal, Rabbit,IgG
<b>Purification</b>	The antibody was affinity-purified from rabbit antiserum by affinity-chromatography using epitope-specific immunogen.
<b>Dilution</b>	WB 1:500-2000 ELISA 1:5000-20000
<b>Concentration</b>	1 mg/ml
<b>Purity</b>	≥90%
<b>Storage Stability</b>	-20°C/1 year
<b>Synonyms</b>	
<b>Observed Band</b>	23kD
<b>Cell Pathway</b>	Nucleus . Cell membrane . Colocalizes with PLXNB3 at the plasma membrane (PubMed:16122393). .
<b>Tissue Specificity</b>	Neuron-specific.
<b>Function</b>	function:Binds and exchanges GTP and GDP.,miscellaneous:Shows rapid uncatalyzed guanine nucleotide dissociation rates, which are much faster than those of most Ras subfamily members.,similarity:Belongs to the small GTPase superfamily. Ras family.,subunit:Interacts with MLLT4, the C-terminal domain of RALGDS and RLF, but not with RIN1 and PIK3CA. RLF binds exclusively to the active GTP-bound form (By similarity). Binds calmodulin.,tissue specificity:Neuron-specific.,
<b>Background</b>	RIN belongs to the RAS (HRAS; MIM 190020) superfamily of small GTPases (Shao et al., 1999 [PubMed 10545207]).[supplied by OMIM, Mar 2008],
<b>matters needing attention</b>	Avoid repeated freezing and thawing!



**Usage suggestions**

This product can be used in immunological reaction related experiments. For more information, please consult technical personnel.

**Products Images**



Western blot analysis of lysates from K562 cells, primary antibody was diluted at 1:1000, 4° over night