



# GUC2B Polyclonal Antibody

<b>Catalog No</b>	YP-Ab-05632
<b>Isotype</b>	IgG
<b>Reactivity</b>	Human;Rat;Mouse;
<b>Applications</b>	WB;ELISA
<b>Gene Name</b>	GUCA2B
<b>Protein Name</b>	Guanylate cyclase activator 2B [Cleaved into: Guanylate cyclase C-activating peptide 2 (Guanylate cyclase C-activating peptide II) (GCAP-II); Uroguanylin (UGN)]
<b>Immunogen</b>	Synthesized peptide derived from part region of human protein AA range: 1-50
<b>Specificity</b>	GUC2B Polyclonal Antibody detects endogenous levels of protein.
<b>Formulation</b>	Liquid in PBS containing 50% glycerol, and 0.02% sodium azide.
<b>Source</b>	Polyclonal, Rabbit,IgG
<b>Purification</b>	The antibody was affinity-purified from rabbit antiserum by affinity-chromatography using epitope-specific immunogen.
<b>Dilution</b>	WB 1:500-2000 ELISA 1:5000-20000
<b>Concentration</b>	1 mg/ml
<b>Purity</b>	≥90%
<b>Storage Stability</b>	-20°C/1 year
<b>Synonyms</b>	
<b>Observed Band</b>	12kD
<b>Cell Pathway</b>	Secreted.
<b>Tissue Specificity</b>	Stomach and intestine.
<b>Function</b>	function:Endogenous activator of intestinal guanylate cyclase. It stimulates this enzyme through the same receptor binding region as the heat-stable enterotoxins. May be a potent physiological regulator of intestinal fluid and electrolyte transport. May be an autocrine/paracrine regulator of intestinal salt and water transport.,similarity:Belongs to the guanylin family.,tissue specificity:Stomach and intestine.,
<b>Background</b>	This gene encodes a preproprotein that is proteolytically processed to generate multiple protein products, including uroguanylin, a member of the guanylin family of peptides and an endogenous ligand of the guanylate cyclase-C receptor. Binding of this peptide to its cognate receptor stimulates an increase in cyclic GMP and may regulate salt and water homeostasis in the intestine and kidneys. [provided by RefSeq, Nov 2015],



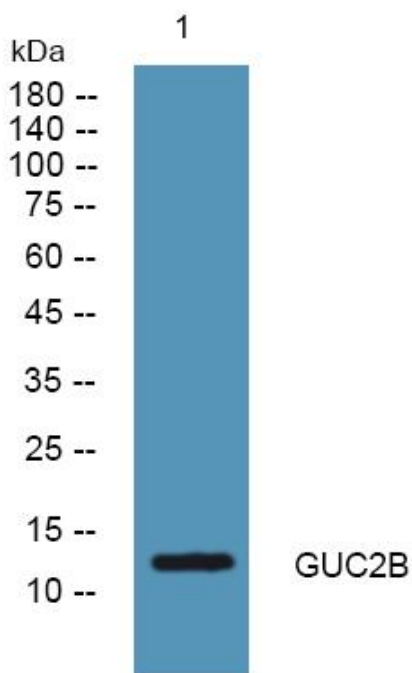
**matters needing attention**

Avoid repeated freezing and thawing!

**Usage suggestions**

This product can be used in immunological reaction related experiments. For more information, please consult technical personnel.

## Products Images



Western blot analysis of lysates from K562 cells, primary antibody was diluted at 1:1000, 4° over night