



HMX2 Polyclonal Antibody

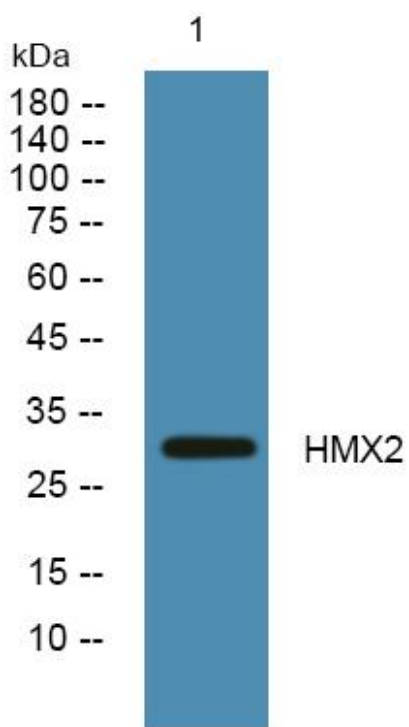
Catalog No	YP-Ab-05647
Isotype	IgG
Reactivity	Human;Mouse
Applications	WB;ELISA
Gene Name	HMX2
Protein Name	Homeobox protein HMX2 (Homeobox protein H6 family member 2)
Immunogen	Synthesized peptide derived from part region of human protein
Specificity	HMX2 Polyclonal Antibody detects endogenous levels of protein.
Formulation	Liquid in PBS containing 50% glycerol, and 0.02% sodium azide.
Source	Polyclonal, Rabbit,IgG
Purification	The antibody was affinity-purified from rabbit antiserum by affinity-chromatography using epitope-specific immunogen.
Dilution	WB 1:500-2000 ELISA 1:5000-20000
Concentration	1 mg/ml
Purity	≥90%
Storage Stability	-20°C/1 year
Synonyms	
Observed Band	30kD
Cell Pathway	Nucleus .
Tissue Specificity	Testis,
Function	function:Transcription factor involved in specification of neuronal cell types and which is required for inner ear and hypothalamus development.,similarity:Belongs to the HMX homeobox family.,similarity:Contains 1 homeobox DNA-binding domain.,
Background	The protein encoded by this gene is a member of the NKL homeobox family of transcription factors. Members in this family are of ancient origin and play an important role in organ development during embryogenesis. A related mouse protein plays a role in patterning of inner ear structures. In humans, variations in a region containing this gene have been associated with inner ear malformations, vestibular dysfunction, and hearing loss. [provided by RefSeq, Aug 2012],
matters needing attention	Avoid repeated freezing and thawing!



Usage suggestions

This product can be used in immunological reaction related experiments. For more information, please consult technical personnel.

Products Images



Western blot analysis of lysates from K562 cells, primary antibody was diluted at 1:1000, 4° over night