



# TGIF2 Polyclonal Antibody

<b>Catalog No</b>	YP-Ab-05669
<b>Isotype</b>	IgG
<b>Reactivity</b>	Human;Mouse
<b>Applications</b>	WB;ELISA
<b>Gene Name</b>	TGIF2
<b>Protein Name</b>	Homeobox protein TGIF2 (5'-TG-3'-interacting factor 2) (TGF-beta-induced transcription factor 2) (TGFB-induced factor 2)
<b>Immunogen</b>	Synthesized peptide derived from part region of human protein
<b>Specificity</b>	TGIF2 Polyclonal Antibody detects endogenous levels of protein.
<b>Formulation</b>	Liquid in PBS containing 50% glycerol, and 0.02% sodium azide.
<b>Source</b>	Polyclonal, Rabbit,IgG
<b>Purification</b>	The antibody was affinity-purified from rabbit antiserum by affinity-chromatography using epitope-specific immunogen.
<b>Dilution</b>	WB 1:500-2000 ELISA 1:5000-20000
<b>Concentration</b>	1 mg/ml
<b>Purity</b>	≥90%
<b>Storage Stability</b>	-20°C/1 year
<b>Synonyms</b>	
<b>Observed Band</b>	26kD
<b>Cell Pathway</b>	Nucleus. Excluded from nucleoli.
<b>Tissue Specificity</b>	Widely expressed. Highly expressed in heart, kidney and testis. Weakly expressed in brain and prostate.
<b>Function</b>	function:Transcriptional repressor, which probably repress transcription by binding directly the 5'-CTGTCAA-3' DNA sequence or by interacting with TGF-beta activated SMAD proteins. Probably represses transcription via the recruitment of histone deacetylase proteins.,miscellaneous:TGIF2 is amplified and overexpressed in several ovarian cancer cell lines.,PTM:The C-terminal part is phosphorylated in response to EGF signaling by the Ras/MAPK pathway.,similarity:Belongs to the TALE/TGIF homeobox family.,similarity:Contains 1 homeobox DNA-binding domain.,subcellular location:Excluded from nucleoli.,subunit:Interacts with the transcriptional modulator SMAD3 and the histone deacetylase HDAC1.,tissue specificity:Widely expressed. Highly expressed in heart, kidney and testis. Weakly expressed in brain and prostate.,
<b>Background</b>	The protein encoded by this gene is a DNA-binding homeobox protein and a transcriptional repressor, which appears to repress transcription by recruiting histone deacetylases to TGF beta-responsive genes. This gene is amplified and



over-expressed in some ovarian cancers. Alternative splicing results in multiple transcript variants. A related pseudogene has been identified on chromosome 1. Read-through transcription also exists between this gene and the neighboring downstream C20orf24 (chromosome 20 open reading frame 24) gene. [provided by RefSeq, Dec 2010],

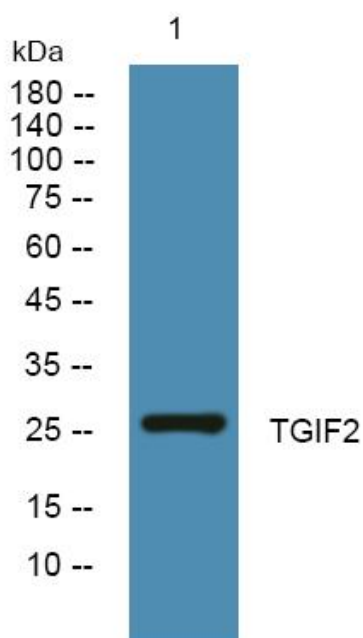
**matters needing attention**

Avoid repeated freezing and thawing!

**Usage suggestions**

This product can be used in immunological reaction related experiments. For more information, please consult technical personnel.

**Products Images**



Western blot analysis of lysates from SH-SY5Y cells, primary antibody was diluted at 1:1000, 4°over night