



VPREB Polyclonal Antibody

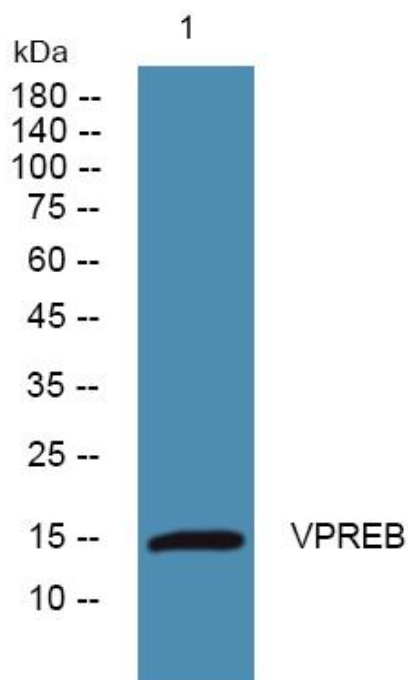
| | |
|----------------------------------|---|
| Catalog No | YP-Ab-05675 |
| Isotype | IgG |
| Reactivity | Human;Rat;Mouse; |
| Applications | WB;ELISA |
| Gene Name | VPREB1 VPREB |
| Protein Name | Immunoglobulin iota chain (CD179 antigen-like family member A) (Protein VPreB1) (V(pre)B protein) (VpreB protein) (CD antigen CD179a) |
| Immunogen | Synthesized peptide derived from part region of human protein |
| Specificity | VPREB Polyclonal Antibody detects endogenous levels of protein. |
| Formulation | Liquid in PBS containing 50% glycerol, and 0.02% sodium azide. |
| Source | Polyclonal, Rabbit,IgG |
| Purification | The antibody was affinity-purified from rabbit antiserum by affinity-chromatography using epitope-specific immunogen. |
| Dilution | WB 1:500-2000 ELISA 1:5000-20000 |
| Concentration | 1 mg/ml |
| Purity | ≥90% |
| Storage Stability | -20°C/1 year |
| Synonyms | |
| Observed Band | 15kD |
| Cell Pathway | Endoplasmic reticulum . |
| Tissue Specificity | Only expressed by pre-B-cells. |
| Function | function:Associates with the Ig-mu chain to form a molecular complex that is expressed on the surface of pre-B-cells. This complex presumably regulates ig gene rearrangements in the early steps of B-cell differentiation.,similarity:Belongs to the immunoglobulin superfamily.,subunit:Associates non-covalently with IGLL1.,tissue specificity:Only expressed by pre-B-cells., |
| Background | The protein encoded by this gene belongs to the immunoglobulin superfamily and is expressed selectively at the early stages of B cell development, namely, in proB and early preB cells. This gene encodes the iota polypeptide chain that is associated with the Ig-mu chain to form a molecular complex which is expressed on the surface of pre-B cells. The complex is thought to regulate Ig gene rearrangements in the early steps of B-cell differentiation. Alternative splicing results in multiple transcript variants. [provided by RefSeq, Jan 2015], |
| matters needing attention | Avoid repeated freezing and thawing! |



Usage suggestions

This product can be used in immunological reaction related experiments. For more information, please consult technical personnel.

Products Images



Western blot analysis of lysates from Jarkat cells, primary antibody was diluted at 1:1000, 4° over night