



LRBA Polyclonal Antibody

Catalog No	YP-Ab-05695
Isotype	IgG
Reactivity	Human;Mouse
Applications	IHC;IF
Gene Name	LRBA BGL CDC4L LBA
Protein Name	Lipopolysaccharide-responsive and beige-like anchor protein (Beige-like protein) (CDC4-like protein)
Immunogen	Synthesized peptide derived from human protein . at AA range: 1970-2050
Specificity	LRBA Polyclonal Antibody detects endogenous levels of protein.
Formulation	Liquid in PBS containing 50% glycerol, and 0.02% sodium azide.
Source	Polyclonal, Rabbit,IgG
Purification	The antibody was affinity-purified from rabbit antiserum by affinity-chromatography using epitope-specific immunogen.
Dilution	IHC-p 1:50-300. IF 1:50-200
Concentration	1 mg/ml
Purity	≥90%
Storage Stability	-20°C/1 year
Synonyms	
Observed Band	314kD
Cell Pathway	Cell membrane ; Single-pass membrane protein . Endoplasmic reticulum membrane ; Single-pass membrane protein . Golgi apparatus, trans-Golgi network membrane ; Single-pass membrane protein . Lysosome membrane ; Single-pass membrane protein .
Tissue Specificity	Ubiquitous.
Function	caution:Was originally (PubMed:1505956) said to be similar to yeast CDC4, but that similarity is very limited.,induction:By lipopolysaccharide (LPS).,PTM:Phosphorylated upon DNA damage, probably by ATM or ATR.,similarity:Contains 1 BEACH domain.,similarity:Contains 6 WD repeats.,
Background	The protein encoded by this gene is a member of the WDL-BEACH-WD (WBW) gene family. Its expression is induced in B cells and macrophages by bacterial lipopolysaccharides (LPS). The encoded protein associates with protein kinase A and may be involved in leading intracellular vesicles to activated receptor complexes, which aids in the secretion and/or membrane deposition of immune effector molecules. Defects in this gene are associated with the disorder common variable immunodeficiency-8 with autoimmunity. Two transcript variants encoding different isoforms have been found for this gene. [provided by RefSeq, Dec 2012],

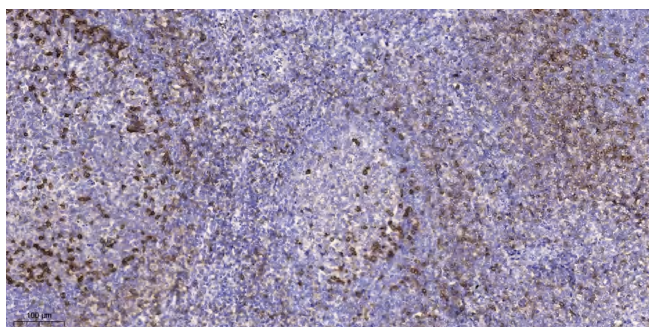
**matters needing attention**

Avoid repeated freezing and thawing!

Usage suggestions

This product can be used in immunological reaction related experiments. For more information, please consult technical personnel.

Products Images



Immunohistochemical analysis of paraffin-embedded human tonsil. 1, Antibody was diluted at 1:200(4° overnight). 2, Tris-EDTA,pH9.0 was used for antigen retrieval. 3,Secondary antibody was diluted at 1:200(room temperature, 45min).