



# IMP2L Polyclonal Antibody

<b>Catalog No</b>	YP-Ab-05738
<b>Isotype</b>	IgG
<b>Reactivity</b>	Human;Mouse
<b>Applications</b>	WB;ELISA
<b>Gene Name</b>	IMMP2L
<b>Protein Name</b>	Mitochondrial inner membrane protease subunit 2 (EC 3.4.21.-) (IMP2-like protein)
<b>Immunogen</b>	Synthesized peptide derived from human protein . at AA range: 30-110
<b>Specificity</b>	IMP2L Polyclonal Antibody detects endogenous levels of protein.
<b>Formulation</b>	Liquid in PBS containing 50% glycerol, and 0.02% sodium azide.
<b>Source</b>	Polyclonal, Rabbit,IgG
<b>Purification</b>	The antibody was affinity-purified from rabbit antiserum by affinity-chromatography using epitope-specific immunogen.
<b>Dilution</b>	WB 1:500-2000 ELISA 1:5000-20000
<b>Concentration</b>	1 mg/ml
<b>Purity</b>	≥90%
<b>Storage Stability</b>	-20°C/1 year
<b>Synonyms</b>	
<b>Observed Band</b>	19kD
<b>Cell Pathway</b>	Mitochondrion inner membrane ; Single-pass membrane protein .
<b>Tissue Specificity</b>	Expressed in all tissues tested except adult liver and lung.
<b>Function</b>	disease:Defects in IMMP2L may be a cause of Gilles de la Tourette syndrome (GTS) [MIM:137580]. GTS is a neurologic disorder manifested particularly by motor and vocal tics and associated with behavioral abnormalities.,function:Catalyzes the removal of transit peptides required for the targeting of proteins from the mitochondrial matrix, across the inner membrane, into the inter-membrane space. Known to process the nuclear encoded protein DIABLO.,similarity:Belongs to the peptidase S26 family.,similarity:Belongs to the peptidase S26 family. IMP2 subfamily.,subunit:Heterodimer of 2 subunits, IMMPL1 and IMMPL2.,tissue specificity:Expressed in all tissues tested except adult liver and lung.,
<b>Background</b>	This gene encodes a protein involved in processing the signal peptide sequences used to direct mitochondrial proteins to the mitochondria. The encoded protein resides in the mitochondria and is one of the necessary proteins for the catalytic activity of the mitochondrial inner membrane peptidase (IMP) complex. Two variants that encode the same protein have been described for this gene.



[provided by RefSeq, Sep 2011],

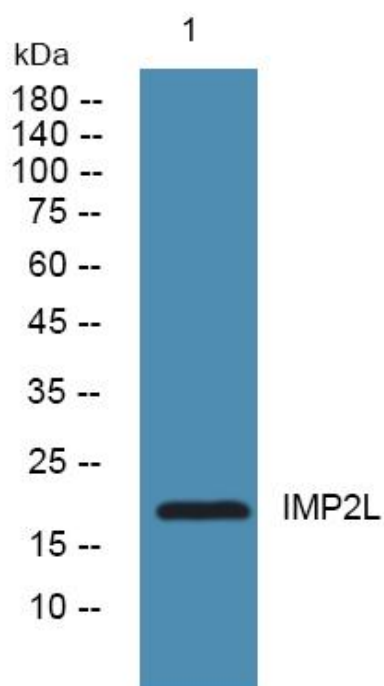
**matters needing attention**

Avoid repeated freezing and thawing!

**Usage suggestions**

This product can be used in immunological reaction related experiments. For more information, please consult technical personnel.

## Products Images



Western blot analysis of lysates from Jarkat cells, primary antibody was diluted at 1:1000, 4° over night