



MADCA Polyclonal Antibody

Catalog No	YP-Ab-05756
Isotype	IgG
Reactivity	Human;Rat;Mouse
Applications	WB;ELISA
Gene Name	MADCAM1
Protein Name	Mucosal addressin cell adhesion molecule 1 (MAdCAM-1) (hMAdCAM-1)
Immunogen	Synthesized peptide derived from human protein . at AA range: 260-340
Specificity	MADCA Polyclonal Antibody detects endogenous levels of protein.
Formulation	Liquid in PBS containing 50% glycerol, and 0.02% sodium azide.
Source	Polyclonal, Rabbit,IgG
Purification	The antibody was affinity-purified from rabbit antiserum by affinity-chromatography using epitope-specific immunogen.
Dilution	WB 1:500-2000 ELISA 1:5000-20000
Concentration	1 mg/ml
Purity	≥90%
Storage Stability	-20°C/1 year
Synonyms	
Observed Band	42kD
Cell Pathway	Membrane; Single-pass type I membrane protein.
Tissue Specificity	Highly expressed on high endothelial venules (HEV) and lamina propria venules found in the small intestine, and to a lesser extent in the colon and spleen. Very low levels of expression found in pancreas and brain. Not expressed in the thymus, prostate, ovaries, testis, heart, placenta, lung, liver, skeletal muscle, kidney or peripheral blood leukocytes.
Function	alternative products:Additional isoforms seem to exist,function:Cell adhesion leukocyte receptor expressed by mucosal venules, helps to direct lymphocyte traffic into mucosal tissues including the Peyer patches and the intestinal lamina propria. It can bind both integrin alpha-4/beta-7 and L-selectin, regulating both the passage and retention of leukocytes. Isoform 2, lacking the mucin-like domain, may be specialized in supporting integrin alpha-4/beta-7-dependent adhesion strengthening, independent of L-selectin binding.,polymorphism:The number of repeats in the mucin domain varies between 5 and 8 repeats.,PTM:The Ser/Thr-rich mucin-like domain may provide possible sites for O-glycosylation.,similarity:Contains 2 Ig-like (immunoglobulin-like) domains.,subunit:Homodimer.,tissue specificity:Highly expressed on high endothelial venules (HEV) and lamina propria venules found in the small int

**Background**

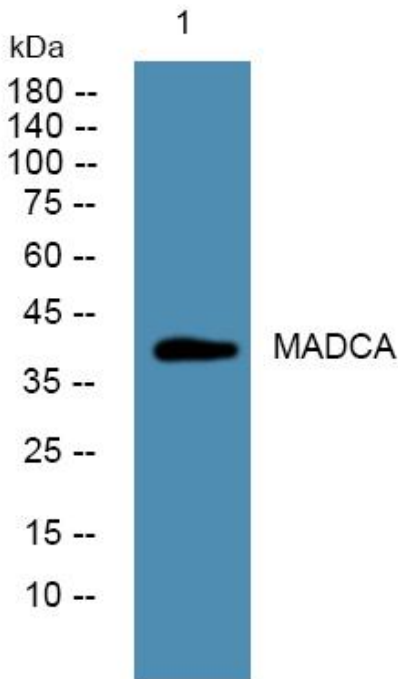
The protein encoded by this gene is an endothelial cell adhesion molecule that interacts preferentially with the leukocyte beta7 integrin LPAM-1 (alpha4beta7), L-selectin, and VLA-4 (alpha4beta1) on myeloid cells to direct leukocytes into mucosal and inflamed tissues. It is a member of the immunoglobulin family and is similar to ICAM1 and VCAM1. At least seven alternatively spliced transcripts encoding different protein isoforms have been found for this gene, but the full-length nature of some variants has not been determined. [provided by RefSeq, Jul 2008],

matters needing attention

Avoid repeated freezing and thawing!

Usage suggestions

This product can be used in immunological reaction related experiments. For more information, please consult technical personnel.

Products Images

Western blot analysis of lysates from Jarkat cells, primary antibody was diluted at 1:1000, 4° over night