



MOG Polyclonal Antibody

Catalog No	YP-Ab-05765
Isotype	IgG
Reactivity	Human;Mouse;Rat
Applications	WB;ELISA
Gene Name	MOG
Protein Name	Myelin-oligodendrocyte glycoprotein
Immunogen	Synthesized peptide derived from human protein . at AA range: 30-110
Specificity	MOG Polyclonal Antibody detects endogenous levels of protein.
Formulation	Liquid in PBS containing 50% glycerol, and 0.02% sodium azide.
Source	Polyclonal, Rabbit,IgG
Purification	The antibody was affinity-purified from rabbit antiserum by affinity-chromatography using epitope-specific immunogen.
Dilution	WB 1:500-2000 ELISA 1:5000-20000
Concentration	1 mg/ml
Purity	≥90%
Storage Stability	-20°C/1 year
Synonyms	
Observed Band	27kD
Cell Pathway	[Isoform 1]: Cell membrane ; Multi-pass membrane protein .; [Isoform 5]: Cell membrane ; Multi-pass membrane protein .; [Isoform 2]: Cell membrane ; Single-pass type I membrane protein .; [Isoform 3]: Cell membrane ; Single-pass type I membrane protein .; [Isoform 4]: Cell membrane ; Single-pass type I membrane protein .; [Isoform 6]: Cell membrane ; Single-pass type I membrane protein .; [Isoform 7]: Cell membrane ; Single-pass type I membrane protein .; [Isoform 8]: Cell membrane ; Single-pass type I membrane protein .; [Isoform 9]: Cell membrane ; Single-pass type I membrane protein .
Tissue Specificity	Found exclusively in the CNS, where it is localized on the surface of myelin and oligodendrocyte cytoplasmic membranes.
Function	alternative products:Additional isoforms seem to exist,caution:Do not confuse myelin-oligodendrocyte glycoprotein (MOG) with oligodendrocyte-myelin glycoprotein (OMG).,function:Minor component of the myelin sheath. May be involved in completion and/or maintenance of the myelin sheath and in cell-cell communication.,online information:Myelin oligodendrocyte glycoprotein entry,similarity:Belongs to the immunoglobulin superfamily. BTN/MOG family.,similarity:Contains 1 Ig-like V-type (immunoglobulin-like) domain.,subunit:May form homo- or heterodimers between the different isoforms.,tissue specificity:Found exclusively in the CNS, where it is localized on



the surface of myelin and oligodendrocyte cytoplasmic membranes.,

Background

The product of this gene is a membrane protein expressed on the oligodendrocyte cell surface and the outermost surface of myelin sheaths. Due to this localization, it is a primary target antigen involved in immune-mediated demyelination. This protein may be involved in completion and maintenance of the myelin sheath and in cell-cell communication. Alternatively spliced transcript variants encoding different isoforms have been identified. [provided by RefSeq, Jul 2008],

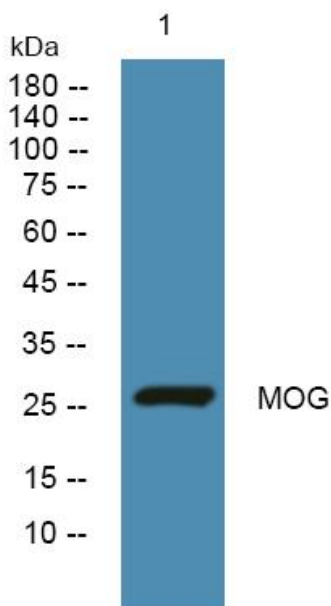
matters needing attention

Avoid repeated freezing and thawing!

Usage suggestions

This product can be used in immunological reaction related experiments. For more information, please consult technical personnel.

Products Images



Western blot analysis of lysates from HCT116 cells, primary antibody was diluted at 1:1000, 4° over night