



NDUB3 Polyclonal Antibody

Catalog No	YP-Ab-05799
Isotype	IgG
Reactivity	Human;Mouse
Applications	WB;ELISA
Gene Name	NDUFB3
Protein Name	NADH dehydrogenase [ubiquinone] 1 beta subcomplex subunit 3 (Complex I-B12) (CI-B12) (NADH-ubiquinone oxidoreductase B12 subunit)
Immunogen	Synthesized peptide derived from human protein . at AA range: 40-120
Specificity	NDUB3 Polyclonal Antibody detects endogenous levels of protein.
Formulation	Liquid in PBS containing 50% glycerol, and 0.02% sodium azide.
Source	Polyclonal, Rabbit,IgG
Purification	The antibody was affinity-purified from rabbit antiserum by affinity-chromatography using epitope-specific immunogen.
Dilution	WB 1:500-2000 ELISA 1:5000-20000
Concentration	1 mg/ml
Purity	≥90%
Storage Stability	-20°C/1 year
Synonyms	
Observed Band	10kD
Cell Pathway	Mitochondrion inner membrane ; Single-pass membrane protein ; Matrix side .
Tissue Specificity	Heart,Lung,
Function	function:Accessory subunit of the mitochondrial membrane respiratory chain NADH dehydrogenase (Complex I), that is believed to be not involved in catalysis. Complex I functions in the transfer of electrons from NADH to the respiratory chain. The immediate electron acceptor for the enzyme is believed to be ubiquinone.,similarity:Belongs to the complex I NDUFB3 subunit family.,subunit:Complex I is composed of 45 different subunits.,
Background	This gene encodes an accessory subunit of the mitochondrial membrane respiratory chain NADH dehydrogenase (Complex I) which is the first enzyme in the electron transport chain of mitochondria. This protein localizes to the inner membrane of the mitochondrion as a single-pass membrane protein. Mutations in this gene contribute to mitochondrial complex 1 deficiency. Alternative splicing results in multiple transcript variants encoding the same protein. Humans have multiple pseudogenes of this gene. [provided by RefSeq, Mar 2012],



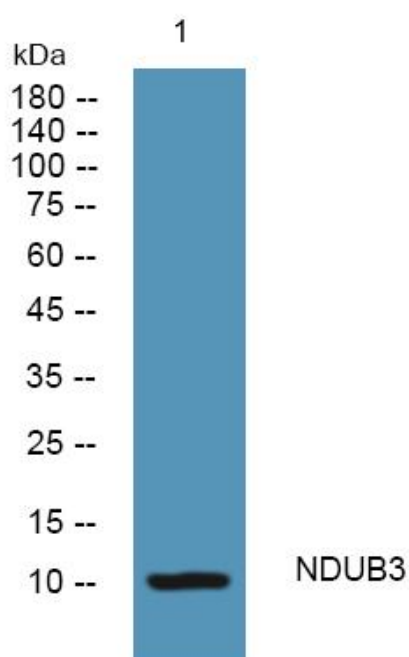
matters needing attention

Avoid repeated freezing and thawing!

Usage suggestions

This product can be used in immunological reaction related experiments. For more information, please consult technical personnel.

Products Images



Western blot analysis of lysates from U2OS cells, primary antibody was diluted at 1:1000, 4° over night