



# NRN1 Polyclonal Antibody

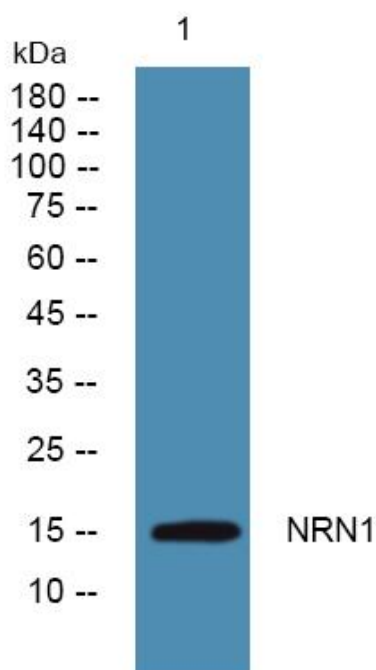
<b>Catalog No</b>	YP-Ab-05827
<b>Isotype</b>	IgG
<b>Reactivity</b>	Human;Rat;Mouse
<b>Applications</b>	WB;ELISA
<b>Gene Name</b>	NRN1 NRN
<b>Protein Name</b>	Neuritin
<b>Immunogen</b>	Synthesized peptide derived from human protein . at AA range: 40-120
<b>Specificity</b>	NRN1 Polyclonal Antibody detects endogenous levels of protein.
<b>Formulation</b>	Liquid in PBS containing 50% glycerol, and 0.02% sodium azide.
<b>Source</b>	Polyclonal, Rabbit,IgG
<b>Purification</b>	The antibody was affinity-purified from rabbit antiserum by affinity-chromatography using epitope-specific immunogen.
<b>Dilution</b>	WB 1:500-2000 ELISA 1:5000-20000
<b>Concentration</b>	1 mg/ml
<b>Purity</b>	≥90%
<b>Storage Stability</b>	-20°C/1 year
<b>Synonyms</b>	
<b>Observed Band</b>	15kD
<b>Cell Pathway</b>	Cell membrane ; Lipid-anchor, GPI-anchor . Cell junction, synapse .
<b>Tissue Specificity</b>	Adrenal cortex,Brain,Uterus,
<b>Function</b>	function:Promotes neurite outgrowth and especially branching of neuritic processes in primary hippocampal and cortical cells.,similarity:Belongs to the neuritin family.,
<b>Background</b>	This gene encodes a member of the neuritin family, and is expressed in postmitotic-differentiating neurons of the developmental nervous system and neuronal structures associated with plasticity in the adult. The expression of this gene can be induced by neural activity and neurotrophins. The encoded protein contains a consensus cleavage signal found in glycosylphosphatidylinositol (GPI)-anchored proteins. The encoded protein promotes neurite outgrowth and arborization, suggesting its role in promoting neuritogenesis. Overexpression of the encoded protein may be associated with astrocytoma progression. Alternative splicing results in multiple transcript variants. [provided by RefSeq, Jul 2013],
<b>matters needing attention</b>	Avoid repeated freezing and thawing!



### Usage suggestions

This product can be used in immunological reaction related experiments. For more information, please consult technical personnel.

## Products Images



Western blot analysis of lysates from Jarkat cells, primary antibody was diluted at 1:1000, 4° over night