



## 7B2 Polyclonal Antibody

|                           |  |
|---------------------------|--|
| <b>Catalog No</b>         | YP-Ab-05831  |
| <b>Isotype</b>            | IgG  |
| <b>Reactivity</b>         | Human;Mouse;Rat  |
| <b>Applications</b>       | WB;ELISA   |
| <b>Gene Name</b>          | SCG5 SGNE1   |
| <b>Protein Name</b>       | Neuroendocrine protein 7B2 (Pituitary polypeptide) (Secretogranin V) (Secretogranin-5) (Secretory granule endocrine protein I) [Cleaved into: N-terminal peptide; C-terminal peptide]  |
| <b>Immunogen</b>          | Synthesized peptide derived from human protein . at AA range: 90-170   |
| <b>Specificity</b>        | 7B2 Polyclonal Antibody detects endogenous levels of protein.  |
| <b>Formulation</b>        | Liquid in PBS containing 50% glycerol, and 0.02% sodium azide.   |
| <b>Source</b>             | Polyclonal, Rabbit,IgG   |
| <b>Purification</b>       | The antibody was affinity-purified from rabbit antiserum by affinity-chromatography using epitope-specific immunogen.  |
| <b>Dilution</b>           | WB 1:500-2000 ELISA 1:5000-20000   |
| <b>Concentration</b>      | 1 mg/ml  |
| <b>Purity</b>             | ≥90%   |
| <b>Storage Stability</b>  | -20°C/1 year   |
| <b>Synonyms</b>           |  |
| <b>Observed Band</b>      | 23kD   |
| <b>Cell Pathway</b>       | Secreted. Neuroendocrine and endocrine secretory granules.   |
| <b>Tissue Specificity</b> | Brain,Pancreas,Pituitary,  |
| <b>Function</b>           | function:Acts as a molecular chaperone for PCSK2/PC2, preventing its premature activation in the regulated secretory pathway. Binds to inactive PCSK2 in the endoplasmic reticulum and facilitates its transport from there to later compartments of the secretory pathway where it is proteolytically matured and activated. Also required for cleavage of PCSK2 but does not appear to be involved in its folding. Plays a role in regulating pituitary hormone secretion. The C-terminal peptide inhibits PCSK2 in vitro.,PTM:Proteolytically cleaved in the Golgi by a furin-like convertase to generate bioactive peptides.,PTM:Sulfated on tyrosine residues.,similarity:Belongs to the 7B2 family.,subcellular location:Neuroendocrine and endocrine secretory granules.,subunit:Interacts with PCSK2/PC2 early in the secretory pathway. Dissociation occurs at later stages., |
| <b>Background</b>         | This gene encodes a secreted chaperone protein that prevents the aggregation of other secreted proteins, including proteins that are associated with neurodegenerative and metabolic disease. The encoded protein may be best  |



known for its role in the trafficking and activation of prohormone convertase PC2 (encoded by Gene ID: 5126). Phosphorylation of the encoded protein has been shown to have an inhibitory effect on its chaperone function. [provided by RefSeq, Jul 2016],

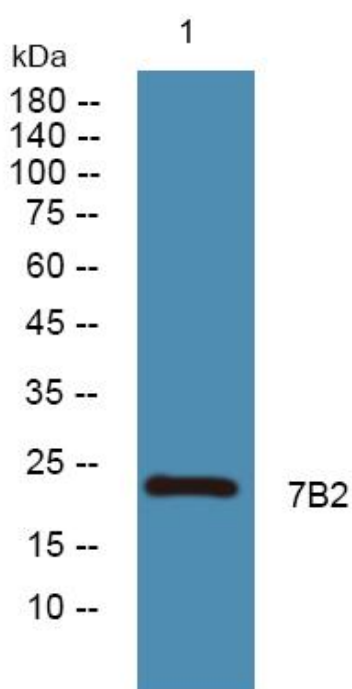
**matters needing attention**

Avoid repeated freezing and thawing!

**Usage suggestions**

This product can be used in immunological reaction related experiments. For more information, please consult technical personnel.

**Products Images**



Western blot analysis of lysates from K562 cells, primary antibody was diluted at 1:1000, 4° over night