



NGDN Polyclonal Antibody

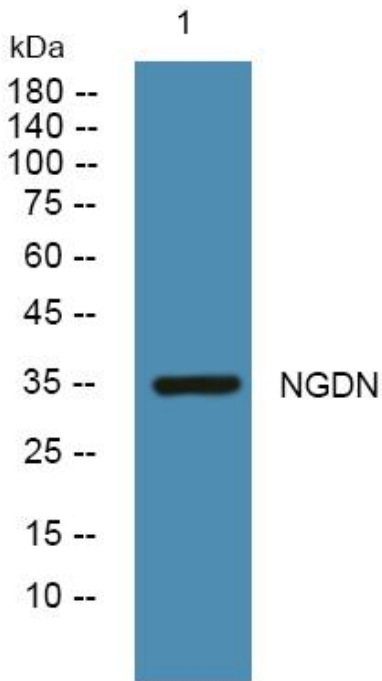
Catalog No	YP-Ab-05837
Isotype	IgG
Reactivity	Human;Mouse
Applications	WB;ELISA
Gene Name	NGDN C14orf120
Protein Name	Neuroguidin (EIF4E-binding protein)
Immunogen	Synthesized peptide derived from human protein . at AA range: 240-320
Specificity	NGDN Polyclonal Antibody detects endogenous levels of protein.
Formulation	Liquid in PBS containing 50% glycerol, and 0.02% sodium azide.
Source	Polyclonal, Rabbit,IgG
Purification	The antibody was affinity-purified from rabbit antiserum by affinity-chromatography using epitope-specific immunogen.
Dilution	WB 1:500-2000 ELISA 1:5000-20000
Concentration	1 mg/ml
Purity	≥90%
Storage Stability	-20°C/1 year
Synonyms	
Observed Band	34kD
Cell Pathway	Nucleus . Nucleus, nucleolus . Chromosome, centromere . Cytoplasm . Cell projection, axon . Cell projection, dendrite . Cell projection, filopodium . Detected in axons, dendrites and filopodia. Colocalized with EIF4E in neurites (By similarity). Translocated from nucleolus to nuclear foci in response to UV damage.
Tissue Specificity	Brain,Epithelium,Placenta,
Function	function:Involved in the translational repression of cytoplasmic polyadenylation element (CPE)-containing mRNAs.,similarity:Belongs to the SAS10 family.,subcellular location:Detected in axons, dendrites and filopodia. Colocalized with EIF4E in neurites.,subunit:Interacts with CPEB1 and EIF4E.,
Background	Neuroguidin is an EIF4E (MIM 133440)-binding protein that interacts with CPEB (MIM 607342) and functions as a translational regulatory protein during development of the vertebrate nervous system (Jung et al., 2006 [PubMed 16705177]).[supplied by OMIM, Mar 2008],
matters needing attention	Avoid repeated freezing and thawing!



Usage suggestions

This product can be used in immunological reaction related experiments. For more information, please consult technical personnel.

Products Images



Western blot analysis of lysates from U2OS cells, primary antibody was diluted at 1:1000, 4° over night