

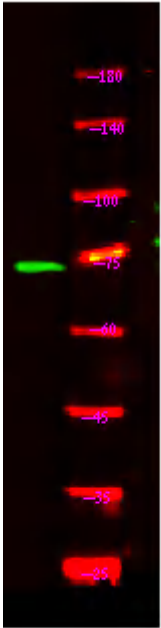


NOL4 Polyclonal Antibody

Catalog No	YP-Ab-05883
Isotype	IgG
Reactivity	Human;Mouse
Applications	WB;ELISA
Gene Name	NOL4 NOLP HRIHFB2255
Protein Name	Nucleolar protein 4 (Nucleolar-localized protein)
Immunogen	Synthesized peptide derived from human protein . at AA range: 50-130
Specificity	NOL4 Polyclonal Antibody detects endogenous levels of protein.
Formulation	Liquid in PBS containing 50% glycerol, and 0.02% sodium azide.
Source	Polyclonal, Rabbit,IgG
Purification	The antibody was affinity-purified from rabbit antiserum by affinity-chromatography using epitope-specific immunogen.
Dilution	WB 1:500-2000 ELISA 1:5000-20000
Concentration	1 mg/ml
Purity	≥90%
Storage Stability	-20°C/1 year
Synonyms	
Observed Band	70kD
Cell Pathway	Nucleus, nucleolus .
Tissue Specificity	Expressed predominantly in fetal brain, adult brain and testis.
Function	tissue specificity:Expressed predominantly in fetal brain, adult brain and testis.,
Background	tissue specificity:Expressed predominantly in fetal brain, adult brain and testis.,
matters needing attention	Avoid repeated freezing and thawing!
Usage suggestions	This product can be used in immunological reaction related experiments. For more information, please consult technical personnel.



Products Images



Western Blot analysis of HEK293 lysis, using primary antibody at 1:1000 dilution. Secondary antibody(catalog#:RS23920) was diluted at 1:10000