



PECR Polyclonal Antibody

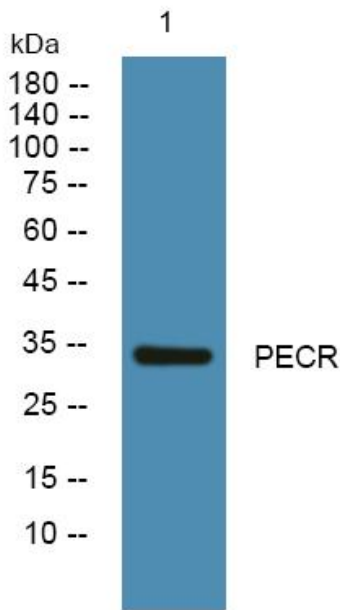
| | |
|----------------------------------|--|
| Catalog No | YP-Ab-05910 |
| Isotype | IgG |
| Reactivity | Human;Rat;Mouse |
| Applications | WB;ELISA |
| Gene Name | PECR PRO1004 |
| Protein Name | Peroxisomal trans-2-enoyl-CoA reductase (TERP) (EC 1.3.1.38) (2,4-dienoyl-CoA reductase-related protein) (DCR-RP) (HPDHase) (pVI-ARL) |
| Immunogen | Synthesized peptide derived from human protein . at AA range: 40-120 |
| Specificity | PECR Polyclonal Antibody detects endogenous levels of protein. |
| Formulation | Liquid in PBS containing 50% glycerol, and 0.02% sodium azide. |
| Source | Polyclonal, Rabbit,IgG |
| Purification | The antibody was affinity-purified from rabbit antiserum by affinity-chromatography using epitope-specific immunogen. |
| Dilution | WB 1:500-2000 ELISA 1:5000-20000 |
| Concentration | 1 mg/ml |
| Purity | ≥90% |
| Storage Stability | -20°C/1 year |
| Synonyms | |
| Observed Band | 33kD |
| Cell Pathway | Peroxisome . |
| Tissue Specificity | Colon,Fetal liver,Liver,Placenta, |
| Function | catalytic activity:Acyl-CoA + NADP(+) = trans-2,3-dehydroacyl-CoA + NADPH.,function:Participates in chain elongation of fatty acids. Has no 2,4-dienoyl-CoA reductase activity.,induction:Not induced by IR.,pathway:Lipid metabolism; fatty acid biosynthesis.,similarity:Belongs to the short-chain dehydrogenases/reductases (SDR) family.,subunit:Interacts with PEX5, probably required to target it into peroxisomes., |
| Background | catalytic activity:Acyl-CoA + NADP(+) = trans-2,3-dehydroacyl-CoA + NADPH.,function:Participates in chain elongation of fatty acids. Has no 2,4-dienoyl-CoA reductase activity.,induction:Not induced by IR.,pathway:Lipid metabolism; fatty acid biosynthesis.,similarity:Belongs to the short-chain dehydrogenases/reductases (SDR) family.,subunit:Interacts with PEX5, probably required to target it into peroxisomes., |
| matters needing attention | Avoid repeated freezing and thawing! |



Usage suggestions

This product can be used in immunological reaction related experiments. For more information, please consult technical personnel.

Products Images



Western blot analysis of lysates from KB cells, primary antibody was diluted at 1:1000, 4° over night