



PI5L1 Polyclonal Antibody

Catalog No	YP-Ab-05921
Isotype	IgG
Reactivity	Human;Mouse
Applications	WB;ELISA
Gene Name	PIP5KL1
Protein Name	Phosphatidylinositol 4-phosphate 5-kinase-like protein 1 (PI(4)P 5-kinase-like protein 1) (PtdIns(4)P-5-kinase-like protein 1) (EC 2.7.1.68)
Immunogen	Synthesized peptide derived from human protein . at AA range: 270-350
Specificity	PI5L1 Polyclonal Antibody detects endogenous levels of protein.
Formulation	Liquid in PBS containing 50% glycerol, and 0.02% sodium azide.
Source	Polyclonal, Rabbit,IgG
Purification	The antibody was affinity-purified from rabbit antiserum by affinity-chromatography using epitope-specific immunogen.
Dilution	WB 1:500-2000 ELISA 1:5000-20000
Concentration	1 mg/ml
Purity	≥90%
Storage Stability	-20°C/1 year
Synonyms	
Observed Band	43kD
Cell Pathway	Cytoplasm. Membrane. Localized to large cytoplasmic vesicular structures. .
Tissue Specificity	Brain,
Function	catalytic activity:ATP + 1-phosphatidyl-1D-myo-inositol 4-phosphate = ADP + 1-phosphatidyl-1D-myo-inositol 4,5-bisphosphate.,caution:It is unsure if the enzyme has intrinsic kinase activity.,function:May act as a scaffold to localize and regulate type I PI(4)P 5-kinases to specific compartments within the cell, where they generate PI(4,5)P2 for actin nucleation, signaling and scaffold protein recruitment and conversion to PI(3,4,5)P3.,similarity:Contains 1 PI5K domain.,subcellular location:Localized to large cytoplasmic vesicular structures.,subunit:Heterodimerizes with other type I phosphatidylinositol-4-phosphate 5-kinase.,
Background	PIP5KL1 is a phosphoinositide kinase-like protein that lacks intrinsic lipid kinase activity but associates with type I PIPKs (see PIP5K1A; MIM 603275) and may play a role in localization of PIPK activity (Chang et al., 2004 [PubMed 14701839]).[supplied by OMIM, Jun 2009],



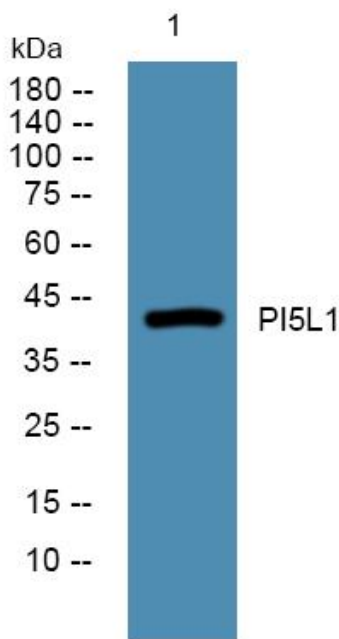
matters needing attention

Avoid repeated freezing and thawing!

Usage suggestions

This product can be used in immunological reaction related experiments. For more information, please consult technical personnel.

Products Images



Western blot analysis of lysates from Jarkat cells, primary antibody was diluted at 1:1000, 4° over night