



PLS2 Polyclonal Antibody

Catalog No	YP-Ab-05930
Isotype	IgG
Reactivity	Human;Rat;Mouse;
Applications	WB;ELISA
Gene Name	PLSCR2
Protein Name	Phospholipid scramblase 2 (PL scramblase 2) (Ca(2+)-dependent phospholipid scramblase 2)
Immunogen	Synthesized peptide derived from human protein . at AA range: 90-170
Specificity	PLS2 Polyclonal Antibody detects endogenous levels of protein.
Formulation	Liquid in PBS containing 50% glycerol, and 0.02% sodium azide.
Source	Polyclonal, Rabbit,IgG
Purification	The antibody was affinity-purified from rabbit antiserum by affinity-chromatography using epitope-specific immunogen.
Dilution	WB 1:500-2000 ELISA 1:5000-20000
Concentration	1 mg/ml
Purity	≥90%
Storage Stability	-20°C/1 year
Synonyms	
Observed Band	24kD
Cell Pathway	Membrane ; Single-pass type II membrane protein .; [Isoform 1]: Nucleus .
Tissue Specificity	Expression of isoform 1 seems restricted to testis.
Function	cofactor:Calcium.,function:May mediate accelerated ATP-independent bidirectional transbilayer migration of phospholipids upon binding calcium ions that results in a loss of phospholipid asymmetry in the plasma membrane. May play a central role in the initiation of fibrin clot formation, in the activation of mast cells and in the recognition of apoptotic and injured cells by the reticuloendothelial system.,online information:Scramblase entry,similarity:Belongs to the phospholipid scramblase family.,tissue specificity:Exclusively expressed in testis.,
Background	This gene encodes a member of the phospholipid scramblase family. Phospholipid scramblases are membrane proteins that mediate calcium-dependent, non-specific movement of plasma membrane phospholipids and phosphatidylserine exposure. The encoded protein contains a low affinity calcium binding motif and may play a role in blood coagulation and apoptosis. Alternatively spliced transcript variants encoding multiple isoforms have been observed for this gene. [provided by RefSeq, Jan 2011],



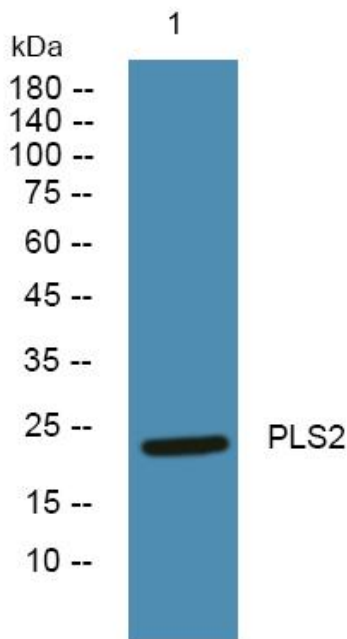
matters needing attention

Avoid repeated freezing and thawing!

Usage suggestions

This product can be used in immunological reaction related experiments. For more information, please consult technical personnel.

Products Images



Western blot analysis of lysates from PC12 cells, primary antibody was diluted at 1:1000, 4° over night