



KCNE4 Polyclonal Antibody

Catalog No	YP-Ab-05955
Isotype	IgG
Reactivity	Human;Mouse
Applications	WB;ELISA
Gene Name	KCNE4
Protein Name	Potassium voltage-gated channel subfamily E member 4 (MinK-related peptide 3) (Minimum potassium ion channel-related peptide 3) (Potassium channel subunit beta MiRP3)
Immunogen	Synthesized peptide derived from human protein . at AA range: 90-170
Specificity	KCNE4 Polyclonal Antibody detects endogenous levels of protein.
Formulation	Liquid in PBS containing 50% glycerol, and 0.02% sodium azide.
Source	Polyclonal, Rabbit,IgG
Purification	The antibody was affinity-purified from rabbit antiserum by affinity-chromatography using epitope-specific immunogen.
Dilution	WB 1:500-2000 ELISA 1:5000-20000
Concentration	1 mg/ml
Purity	≥90%
Storage Stability	-20°C/1 year
Synonyms	
Observed Band	18kD
Cell Pathway	Membrane ; Single-pass membrane protein .
Tissue Specificity	Predominantly expressed in embryo and adult uterus. Low expression found in kidney, small intestine, lung and heart.
Function	function:Ancillary protein that assembles as a beta subunit with a voltage-gated potassium channel complex of pore-forming alpha subunits. Modulates the gating kinetics and enhances stability of the channel complex.,function:Ancillary protein that assembles as a beta subunit with a voltage-gated potassium channel complex of pore-forming alpha subunits. Modulates the gating kinetics and enhances stability of the channel complex. May associate with KCNQ1/KVLQT1 and inhibit potassium current.,similarity:Belongs to the potassium channel KCNE family.,subunit:Associates with KCNQ1/KVLQT1.,tissue specificity:Predominantly expressed in embryo and adult uterus. Low expression found in kidney, small intestine, lung and heart.,
Background	potassium voltage-gated channel subfamily E regulatory subunit 4(KCNE4) Homo sapiens Voltage-gated potassium (Kv) channels represent the most complex class of voltage-gated ion channels from both functional and structural standpoints. Their diverse functions include regulating neurotransmitter release,



heart rate, insulin secretion, neuronal excitability, epithelial electrolyte transport, smooth muscle contraction, and cell volume. This gene encodes a member of the potassium channel, voltage-gated, isk-related subfamily. This member is a type I membrane protein, and a beta subunit that assembles with a potassium channel alpha-subunit to modulate the gating kinetics and enhance stability of the multimeric complex. This gene is prominently expressed in the embryo and in adult uterus. [provided by RefSeq, Jul 2008],

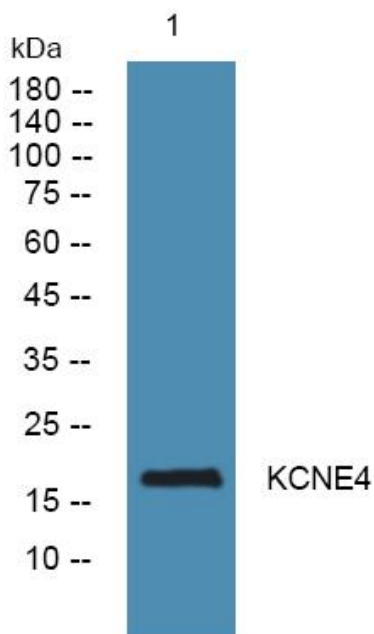
matters needing attention

Avoid repeated freezing and thawing!

Usage suggestions

This product can be used in immunological reaction related experiments. For more information, please consult technical personnel.

Products Images



Western blot analysis of lysates from A431 cells, primary antibody was diluted at 1:1000, 4° over night