



ATP4B Polyclonal Antibody

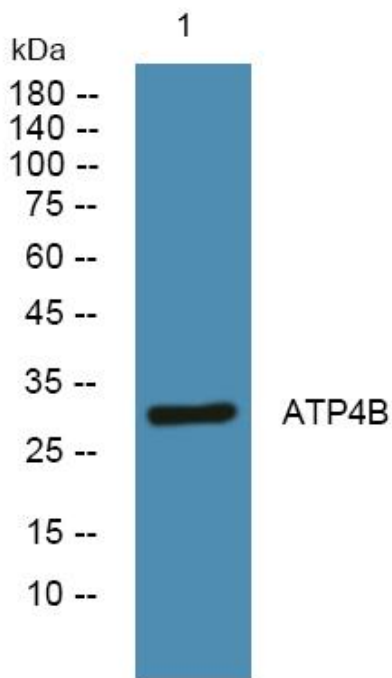
Catalog No	YP-Ab-05965
Isotype	IgG
Reactivity	Human;Rat;Mouse
Applications	WB;ELISA
Gene Name	ATP4B
Protein Name	Potassium-transporting ATPase subunit beta (Gastric H(+)/K(+) ATPase subunit beta) (Proton pump beta chain)
Immunogen	Synthesized peptide derived from human protein . at AA range: 160-240
Specificity	ATP4B Polyclonal Antibody detects endogenous levels of protein.
Formulation	Liquid in PBS containing 50% glycerol, and 0.02% sodium azide.
Source	Polyclonal, Rabbit,IgG
Purification	The antibody was affinity-purified from rabbit antiserum by affinity-chromatography using epitope-specific immunogen.
Dilution	WB 1:500-2000 ELISA 1:5000-20000
Concentration	1 mg/ml
Purity	≥90%
Storage Stability	-20°C/1 year
Synonyms	
Observed Band	32kD
Cell Pathway	Apical cell membrane ; Single-pass type II membrane protein . Cell membrane ; Single-pass type II membrane protein . Localized in the apical canalicular membrane of parietal cells. .
Tissue Specificity	Colon,Liver,
Function	similarity:Belongs to the X(+)/potassium ATPases subunit beta family.,subunit:Composed of two subunits: alpha (catalytic) and beta.,
Background	The protein encoded by this gene belongs to a family of P-type cation-transporting ATPases. The gastric H ⁺ , K ⁺ -ATPase is a heterodimer consisting of a high molecular weight catalytic alpha subunit and a smaller but heavily glycosylated beta subunit. This enzyme is a proton pump that catalyzes the hydrolysis of ATP coupled with the exchange of H ⁺ and K ⁺ ions across the plasma membrane. It is also responsible for gastric acid secretion. This gene encodes the beta subunit of the gastric H ⁺ , K ⁺ -ATPase. [provided by RefSeq, Jul 2008],
matters needing attention	Avoid repeated freezing and thawing!



Usage suggestions

This product can be used in immunological reaction related experiments. For more information, please consult technical personnel.

Products Images



Western blot analysis of lysates from PC12 cells, primary antibody was diluted at 1:1000, 4° over night