

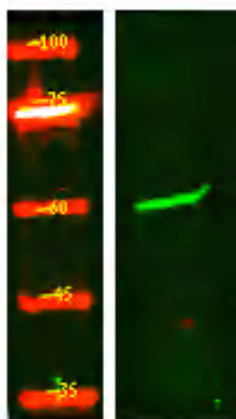


PR38B Polyclonal Antibody

| | |
|----------------------------------|---|
| Catalog No | YP-Ab-05971 |
| Isotype | IgG |
| Reactivity | Human;Rat;Mouse |
| Applications | WB;ELISA |
| Gene Name | PRPF38B |
| Protein Name | Pre-mRNA-splicing factor 38B (Sarcoma antigen NY-SAR-27) |
| Immunogen | Synthesized peptide derived from human protein . at AA range: 180-260 |
| Specificity | PR38B Polyclonal Antibody detects endogenous levels of protein. |
| Formulation | Liquid in PBS containing 50% glycerol, and 0.02% sodium azide. |
| Source | Polyclonal, Rabbit,IgG |
| Purification | The antibody was affinity-purified from rabbit antiserum by affinity-chromatography using epitope-specific immunogen. |
| Dilution | WB 1:500-2000 ELISA 1:5000-20000 |
| Concentration | 1 mg/ml |
| Purity | ≥90% |
| Storage Stability | -20°C/1 year |
| Synonyms | |
| Observed Band | 60kD |
| Cell Pathway | Nucleus . |
| Tissue Specificity | Brain,Epithelium,Lung,Muscle,Skin,Testis, |
| Function | function:May be required for pre-mRNA splicing .,PTM:Phosphorylated upon DNA damage, probably by ATM or ATR.,similarity:Belongs to the PRP38 family., |
| Background | function:May be required for pre-mRNA splicing .,PTM:Phosphorylated upon DNA damage, probably by ATM or ATR.,similarity:Belongs to the PRP38 family., |
| matters needing attention | Avoid repeated freezing and thawing! |
| Usage suggestions | This product can be used in immunological reaction related experiments. For more information, please consult technical personnel. |



Products Images



Western Blot analysis of HEK293 lysis, using primary antibody at 1:1000 dilution. Secondary antibody(catalog#:RS23920) was diluted at 1:10000