

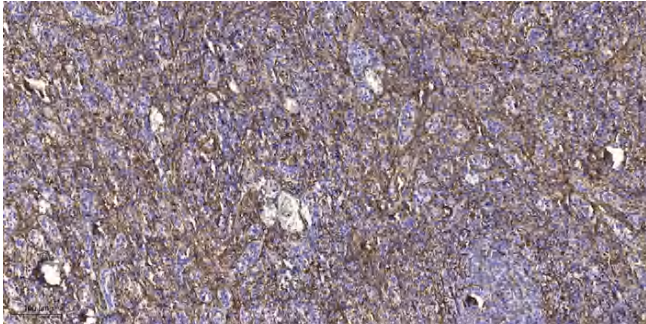


BD1L1 Polyclonal Antibody

Catalog No	YP-Ab-05980
Isotype	IgG
Reactivity	Human;Rat;Mouse;
Applications	IHC;IF
Gene Name	BOD1L1 BOD1L FAM44A KIAA1327
Protein Name	Biorientation of chromosomes in cell division protein 1-like 1 (Protein FAM44A)
Immunogen	Synthesized peptide derived from human protein . at AA range: 1280-1360
Specificity	BD1L1 Polyclonal Antibody detects endogenous levels of protein.
Formulation	Liquid in PBS containing 50% glycerol, and 0.02% sodium azide.
Source	Polyclonal, Rabbit,IgG
Purification	The antibody was affinity-purified from rabbit antiserum by affinity-chromatography using epitope-specific immunogen.
Dilution	IHC-p 1:50-300. IF 1:50-200
Concentration	1 mg/ml
Purity	≥90%
Storage Stability	-20°C/1 year
Synonyms	
Observed Band	335kD
Cell Pathway	Chromosome . Localizes at replication forks: following DNA damage, localizes to damaged replication forks undergoing resection. .
Tissue Specificity	
Function	
Background	Component of the fork protection machinery required to protect stalled/damaged replication forks from uncontrolled DNA2-dependent resection. Acts by stabilizing RAD51 at stalled replication forks and protecting RAD51 nucleofilaments from the antirecombinogenic activities of FBXO18/FBH1 and BLM.
matters needing attention	Avoid repeated freezing and thawing!
Usage suggestions	This product can be used in immunological reaction related experiments. For more information, please consult technical personnel.



Products Images



Immunohistochemical analysis of paraffin-embedded human spleen tissue. 1,primary Antibody was diluted at 1:200(4° overnight). 2, Sodium citrate pH 6.0 was used for antigen retrieval(>98°C,20min). 3,Secondary antibody was diluted at 1:200