



PPM1E Polyclonal Antibody

Catalog No	YP-Ab-05983
Isotype	IgG
Reactivity	Human;Mouse;Rat
Applications	WB;ELISA
Gene Name	PPM1E CAMKN KIAA1072 POPX1
Protein Name	Protein phosphatase 1E (EC 3.1.3.16) (Ca(2+)/calmodulin-dependent protein kinase phosphatase N) (CaMKP-N) (CaMKP-nucleus) (CaMKN) (Partner of PIX 1) (Partner of PIX-alpha) (Partner of PIXA)
Immunogen	Synthesized peptide derived from human protein . at AA range: 460-540
Specificity	PPM1E Polyclonal Antibody detects endogenous levels of protein.
Formulation	Liquid in PBS containing 50% glycerol, and 0.02% sodium azide.
Source	Polyclonal, Rabbit,IgG
Purification	The antibody was affinity-purified from rabbit antiserum by affinity-chromatography using epitope-specific immunogen.
Dilution	WB 1:500-2000 ELISA 1:5000-20000
Concentration	1 mg/ml
Purity	≥90%
Storage Stability	-20°C/1 year
Synonyms	
Observed Band	84kD
Cell Pathway	Nucleus . Cytoplasm . A truncated form, major form, with the C-terminal part missing, is mostly found in the cytoplasm and a little in the nucleus. The full-length, minor form, is found in the nucleus. .
Tissue Specificity	Brain,Testis,
Function	catalytic activity:A phosphoprotein + H(2)O = a protein + phosphate.,cofactor: Binds 2 magnesium or manganese ions per subunit.,function:Protein phosphatase that inactivates multifunctional CaM kinases such as CAMK4 and CAMK2 (By similarity). Dephosphorylates and inactivates PAK. May play a role in the inhibition of actin fiber stress breakdown and in morphological changes driven by TNK2/CDC42.,similarity:Belongs to the PP2C family.,similarity:Contains 1 PP2C-like domain.,subcellular location:A truncated form, major form, with the C-terminal part missing, is mostly found in the cytoplasm and a little in the nucleus. The full length, minor form, is found in the nucleus.,subunit:Heterotrimer. Interacts with PAX1 and ARHGEF6 (or ARHGEF7).,
Background	This gene encodes a member of the PPM family of serine/threonine-protein phosphatases. The encoded protein is localized to the nucleus and



dephosphorylates and inactivates multiple substrates including serine/threonine-protein kinase PAK 1, 5'-AMP-activated protein kinase (AMPK) and the multifunctional calcium/calmodulin-dependent protein kinases. Alternatively spliced transcript variants have been observed for this gene. [provided by RefSeq, May 2012],

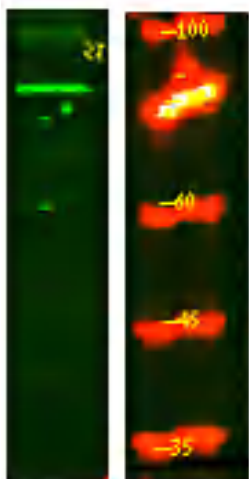
matters needing attention

Avoid repeated freezing and thawing!

Usage suggestions

This product can be used in immunological reaction related experiments. For more information, please consult technical personnel.

Products Images



Western Blot analysis of Hela lysis, using primary antibody at 1:1000 dilution. Secondary antibody(catalog#:RS23920) was diluted at 1:10000