



R51A1 Polyclonal Antibody

Catalog No	YP-Ab-06009
Isotype	IgG
Reactivity	Human;Mouse;
Applications	WB;ELISA
Gene Name	RAD51AP1 PIR51
Protein Name	RAD51-associated protein 1 (RAD51-interacting protein)
Immunogen	Synthesized peptide derived from human protein . at AA range: 90-170
Specificity	R51A1 Polyclonal Antibody detects endogenous levels of protein.
Formulation	Liquid in PBS containing 50% glycerol, and 0.02% sodium azide.
Source	Polyclonal, Rabbit,IgG
Purification	The antibody was affinity-purified from rabbit antiserum by affinity-chromatography using epitope-specific immunogen.
Dilution	WB 1:500-2000 ELISA 1:5000-20000
Concentration	1 mg/ml
Purity	≥90%
Storage Stability	-20°C/1 year
Synonyms	
Observed Band	38kD
Cell Pathway	Chromosome . Nucleus . Chromosome, telomere . Colocalizes with RAD51 to multiple nuclear foci (By similarity). Colocalizes with DMC1 on meiotic chromatin (By similarity). .
Tissue Specificity	Highly expressed in testis and thymus (PubMed:9396801). Lower levels in colon and small intestine (PubMed:9396801). Little or no expression in spleen, prostate, ovary and peripheral blood leukocytes (PubMed:9396801).
Function	alternative products:Additional isoforms seem to exist,function:May participate in a common DNA damage response pathway associated with the activation of homologous recombination and double-strand break repair. Binds to single and double stranded DNA, and is capable of aggregating DNA. Also binds RNA.,PTM:Phosphorylated upon DNA damage, probably by ATM or ATR.,subcellular location:Colocalizes with RAD51 to multiple nuclear foci.,subunit:Isoform 2 interacts with RAD51.,tissue specificity:Highly expressed in testis and thymus. Lower levels in colon and small intestine. Little or no expression in spleen, prostate, ovary and peripheral blood leukocytes.,
Background	alternative products:Additional isoforms seem to exist,function:May participate in a common DNA damage response pathway associated with the activation of homologous recombination and double-strand break repair. Binds to single and double stranded DNA, and is capable of aggregating DNA. Also binds



RNA.,PTM:Phosphorylated upon DNA damage, probably by ATM or ATR.,subcellular location:Colocalizes with RAD51 to multiple nuclear foci.,subunit:Isoform 2 interacts with RAD51.,tissue specificity:Highly expressed in testis and thymus. Lower levels in colon and small intestine. Little or no expression in spleen, prostate, ovary and peripheral blood leukocytes.,

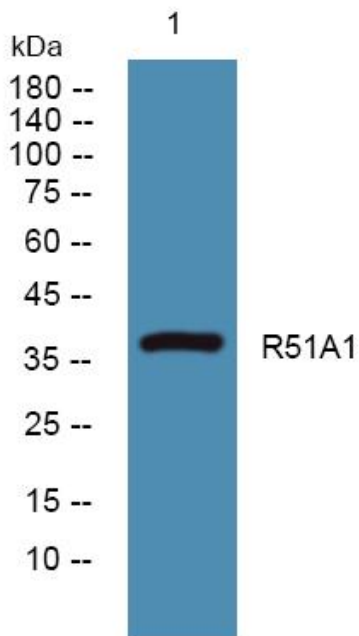
matters needing attention

Avoid repeated freezing and thawing!

Usage suggestions

This product can be used in immunological reaction related experiments. For more information, please consult technical personnel.

Products Images



Western blot analysis of lysates from PC12 cells, primary antibody was diluted at 1:1000, 4° over night