



RSPH1 Polyclonal Antibody

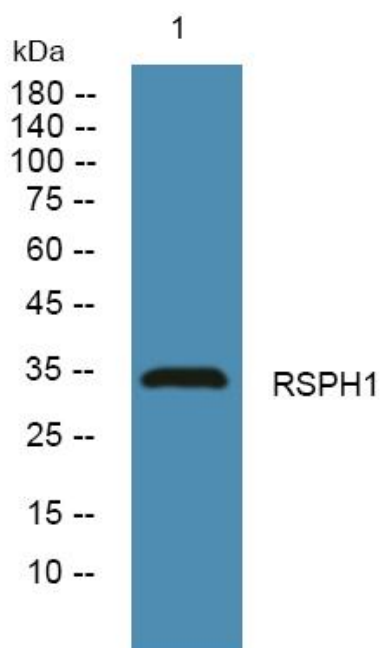
Catalog No	YP-Ab-06010
Isotype	IgG
Reactivity	Human;Mouse
Applications	WB;ELISA
Gene Name	RSPH1 TSA2 TSGA2
Protein Name	Radial spoke head 1 homolog (Cancer/testis antigen 79) (CT79) (Male meiotic metaphase chromosome-associated acidic protein) (Meichroacidin) (Testis-specific gene A2 protein)
Immunogen	Synthesized peptide derived from human protein . at AA range: 50-130
Specificity	RSPH1 Polyclonal Antibody detects endogenous levels of protein.
Formulation	Liquid in PBS containing 50% glycerol, and 0.02% sodium azide.
Source	Polyclonal, Rabbit,IgG
Purification	The antibody was affinity-purified from rabbit antiserum by affinity-chromatography using epitope-specific immunogen.
Dilution	WB 1:500-2000 ELISA 1:5000-20000
Concentration	1 mg/ml
Purity	≥90%
Storage Stability	-20°C/1 year
Synonyms	
Observed Band	33kD
Cell Pathway	Cytoplasm . Cell projection, cilium . Cytoplasmic in late spermatocytes, secondary spermatocytes and round spermatids. Gathered around metaphase chromosomes during meiotic divisions (By similarity). .
Tissue Specificity	Expressed in trachea, lungs, airway brushings, and testes.
Function	function:May play an important role in male meiosis.,similarity:Contains 6 MORN repeats.,subcellular location:Cytoplasmic in late spermatocytes, secondary spermatocytes and round spermatids. Gathered around metaphase chromosomes during meiotic divisions.,tissue specificity:Testis specific.,
Background	This gene encodes a male meiotic metaphase chromosome-associated acidic protein. This gene is expressed in tissues with motile cilia or flagella, including the trachea, lungs, airway brushings, and testes. Mutations in this gene result in primary ciliary dyskinesia-24. Alternatively spliced transcript variants encoding different isoforms have been found for this gene. [provided by RefSeq, Sep 2014],
matters needing attention	Avoid repeated freezing and thawing!



Usage suggestions

This product can be used in immunological reaction related experiments. For more information, please consult technical personnel.

Products Images



Western blot analysis of lysates from U2OS cells, primary antibody was diluted at 1:1000, 4° over night