



RAB23 Polyclonal Antibody

Catalog No	YP-Ab-06043
Isotype	IgG
Reactivity	Human;Rat;Mouse;
Applications	WB;ELISA
Gene Name	RAB23 HSPC137
Protein Name	Ras-related protein Rab-23
Immunogen	Synthesized peptide derived from human protein . at AA range: 120-200
Specificity	RAB23 Polyclonal Antibody detects endogenous levels of protein.
Formulation	Liquid in PBS containing 50% glycerol, and 0.02% sodium azide.
Source	Polyclonal, Rabbit,IgG
Purification	The antibody was affinity-purified from rabbit antiserum by affinity-chromatography using epitope-specific immunogen.
Dilution	WB 1:500-2000 ELISA 1:5000-20000
Concentration	1 mg/ml
Purity	≥90%
Storage Stability	-20°C/1 year
Synonyms	
Observed Band	26kD
Cell Pathway	Cell membrane ; Lipid-anchor ; Cytoplasmic side . Cytoplasm . Cytoplasmic vesicle, autophagosome . Endosome membrane . Cytoplasmic vesicle, phagosome . Cytoplasmic vesicle, phagosome membrane ; Lipid-anchor ; Cytoplasmic side . Recruited to phagosomes containing S.aureus or M.tuberculosis. .
Tissue Specificity	Brain,Fetal brain,Hair follicle,Umbilical cord blood,Uterus,
Function	disease:Defects in RAB23 are the cause of Carpenter syndrome [MIM:201000]; also known as acrocephalopolysyndactyly type 2 (ACPS2). Carpenter syndrome is characterized by craniosynostosis, polysyndactyly, obesity, and cardiac defects. Inheritance is autosomal recessive.,similarity:Belongs to the small GTPase superfamily. Rab family.,
Background	This gene encodes a small GTPase of the Ras superfamily. Rab proteins are involved in the regulation of diverse cellular functions associated with intracellular membrane trafficking, including autophagy and immune response to bacterial infection. The encoded protein may play a role in central nervous system development by antagonizing sonic hedgehog signaling. Disruption of this gene has been implicated in Carpenter syndrome as well as cancer. Alternative splicing results in multiple transcript variants. [provided by RefSeq, Jul 2013],



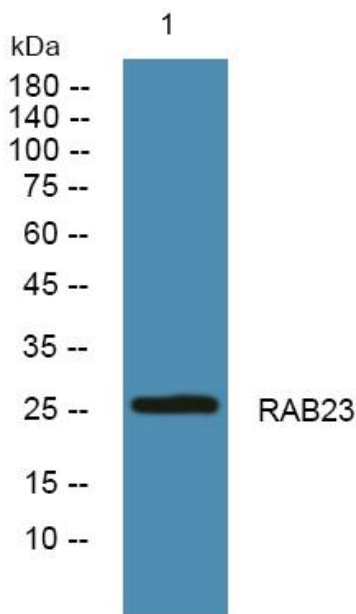
matters needing attention

Avoid repeated freezing and thawing!

Usage suggestions

This product can be used in immunological reaction related experiments. For more information, please consult technical personnel.

Products Images



Western blot analysis of lysates from U2OS cells, primary antibody was diluted at 1:1000, 4° over night