



RHOJ Polyclonal Antibody

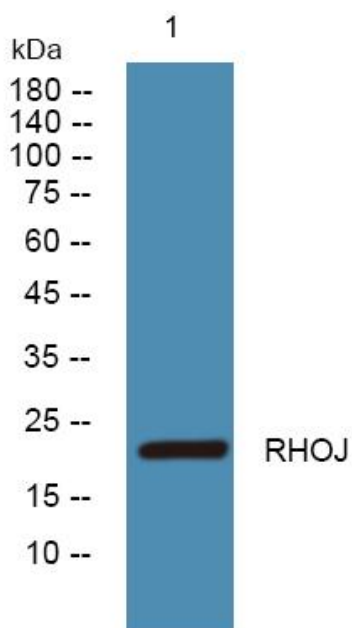
Catalog No	YP-Ab-06100
Isotype	IgG
Reactivity	Human;Mouse
Applications	WB;ELISA
Gene Name	RHOJ ARHJ RASL7B RHOI TCL
Protein Name	Rho-related GTP-binding protein RhoJ (Ras-like protein family member 7B) (Tc10-like GTP-binding protein)
Immunogen	Synthesized peptide derived from human protein . at AA range: 30-110
Specificity	RHOJ Polyclonal Antibody detects endogenous levels of protein.
Formulation	Liquid in PBS containing 50% glycerol, and 0.02% sodium azide.
Source	Polyclonal, Rabbit,IgG
Purification	The antibody was affinity-purified from rabbit antiserum by affinity-chromatography using epitope-specific immunogen.
Dilution	WB 1:500-2000 ELISA 1:5000-20000
Concentration	1 mg/ml
Purity	≥90%
Storage Stability	-20°C/1 year
Synonyms	
Observed Band	23kD
Cell Pathway	Cell membrane ; Lipid-anchor ; Cytoplasmic side . Localization to the plasma membrane is regulated by GLUL. .
Tissue Specificity	Specifically expressed in endothelial cells in different tissues, such as brain, heart, lung and liver.
Function	function:GTP-binding protein with GTPase activity. Elicits the formation of F-actin-rich structures in fibroblasts and is involved in the regulation of cell morphology.,similarity:Belongs to the small GTPase superfamily. Rho family.,subunit:Interacts with the CRIB domains of proteins such as Pak1 and Was/Wasp.,
Background	This gene encodes one of the many small GTP-binding proteins in the Rho family shown to be associated with focal adhesions in endothelial cells (PMID: 21148427, 22103495). The encoded protein is activated by vascular endothelial growth factor and may regulate angiogenesis. [provided by RefSeq, Dec 2011],
matters needing attention	Avoid repeated freezing and thawing!



Usage suggestions

This product can be used in immunological reaction related experiments. For more information, please consult technical personnel.

Products Images



Western blot analysis of lysates from K562 cells,
primary antibody was diluted at 1:1000, 4° over night