



RHXF2 Polyclonal Antibody

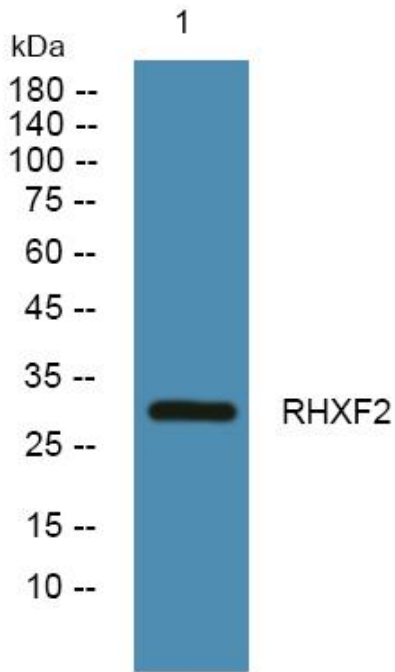
Catalog No	YP-Ab-06104
Isotype	IgG
Reactivity	Human;Rat;Mouse;
Applications	WB;ELISA
Gene Name	RHOXF2 PEPP2 THG1
Protein Name	Rhox homeobox family member 2 (Paired-like homeobox protein PEPP-2) (Testis homeobox gene 1)
Immunogen	Synthesized peptide derived from human protein . at AA range: 50-130
Specificity	RHXF2 Polyclonal Antibody detects endogenous levels of protein.
Formulation	Liquid in PBS containing 50% glycerol, and 0.02% sodium azide.
Source	Polyclonal, Rabbit,IgG
Purification	The antibody was affinity-purified from rabbit antiserum by affinity-chromatography using epitope-specific immunogen.
Dilution	WB 1:500-2000 ELISA 1:5000-20000
Concentration	1 mg/ml
Purity	≥90%
Storage Stability	-20°C/1 year
Synonyms	
Observed Band	31kD
Cell Pathway	Nucleus .
Tissue Specificity	Testis. Not detected in epididymis nor placenta. In testis, mainly expressed in germ cells, but also detected in somatic cells such as Sertoli cells, Leydig cells and peritubular cells (PubMed:28171660).
Function	similarity:Belongs to the paired-like homeobox family. PEPP subfamily.,similarity:Contains 1 homeobox DNA-binding domain.,tissue specificity:Testis. Not detected in epididymis nor placenta.,
Background	This gene, which encodes a transcriptional repressor, is one of two paralogous X-linked homeobox-containing genes and is highly expressed in a variety of cancers. In addition, the encoded protein associates with the cell membrane and with microtubules, and is concentrated at the leading edge of migratory cells. [provided by RefSeq, Dec 2015],
matters needing attention	Avoid repeated freezing and thawing!



Usage suggestions

This product can be used in immunological reaction related experiments. For more information, please consult technical personnel.

Products Images



Western blot analysis of lysates from A431 cells, primary antibody was diluted at 1:1000, 4° over night