



NEK6 Polyclonal Antibody

Catalog No	YP-Ab-06133
Isotype	IgG
Reactivity	Human;Rat;Mouse
Applications	WB;ELISA
Gene Name	NEK6
Protein Name	Serine/threonine-protein kinase Nek6 (EC 2.7.11.1) (Never in mitosis A-related kinase 6) (NimA-related protein kinase 6) (Protein kinase SID6-1512)
Immunogen	Synthesized peptide derived from human protein . at AA range: 90-170
Specificity	NEK6 Polyclonal Antibody detects endogenous levels of protein.
Formulation	Liquid in PBS containing 50% glycerol, and 0.02% sodium azide.
Source	Polyclonal, Rabbit,IgG
Purification	The antibody was affinity-purified from rabbit antiserum by affinity-chromatography using epitope-specific immunogen.
Dilution	WB 1:500-2000 ELISA 1:5000-20000
Concentration	1 mg/ml
Purity	≥90%
Storage Stability	-20°C/1 year
Synonyms	
Observed Band	34kD
Cell Pathway	Cytoplasm. Nucleus. Nucleus speckle. Cytoplasm, cytoskeleton, microtubule organizing center, centrosome. Cytoplasm, cytoskeleton, spindle pole. Colocalizes with APBB1 at the nuclear speckles. Colocalizes with PIN1 in the nucleus. Colocalizes with ATF4, CIR1, ARHGAP33, ANKRA2, CDC42, NEK9, RAD26L, RBBP6, RPS7, TRIP4, RELB and PHF1 in the centrosome. Localizes to spindle microtubules in metaphase and anaphase and to the midbody during cytokinesis.
Tissue Specificity	Ubiquitous, with highest expression in heart and skeletal muscle.
Function	catalytic activity:ATP + a protein = ADP + a phosphoprotein.,cofactor:Magnesium.,function:Activated during M phase. Required for chromosome segregation at metaphase-anaphase transition and therefore for mitotic progression. Inhibition of activity results in apoptosis.,PTM:Autophosphorylated.,similarity:Belongs to the protein kinase superfamily.,similarity:Belongs to the protein kinase superfamily. NEK Ser/Thr protein kinase family. NIMA subfamily.,similarity:Contains 1 protein kinase domain.,tissue specificity:Ubiquitous, with highest expression in heart and skeletal muscle.,



Background

The protein encoded by this gene is a kinase required for progression through the metaphase portion of mitosis. Inhibition of the encoded protein can lead to apoptosis. This protein also can enhance tumorigenesis by suppressing tumor cell senescence. Several transcript variants encoding a few different isoforms have been found for this gene. [provided by RefSeq, Oct 2011],

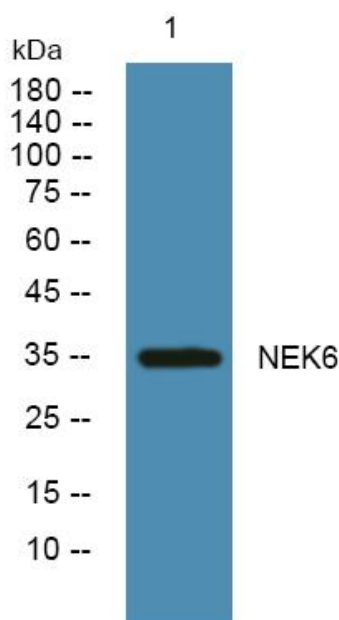
matters needing attention

Avoid repeated freezing and thawing!

Usage suggestions

This product can be used in immunological reaction related experiments. For more information, please consult technical personnel.

Products Images



Western blot analysis of lysates from U2OS cells, primary antibody was diluted at 1:1000, 4° over night