

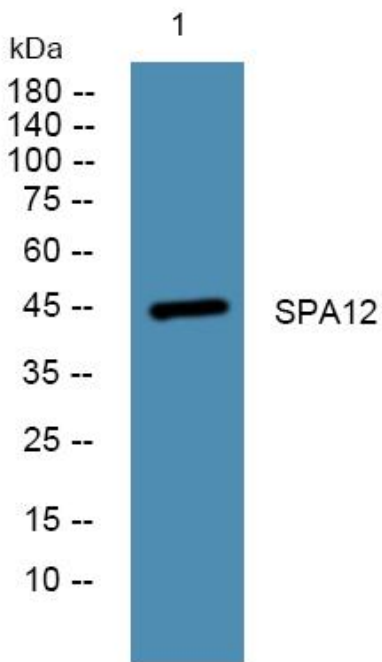


SPA12 Polyclonal Antibody

Catalog No	YP-Ab-06155
Isotype	IgG
Reactivity	Human;Rat;Mouse
Applications	WB;ELISA
Gene Name	SERPINA12
Protein Name	Serpin A12 (OL-64) (Visceral adipose tissue-derived serine protease inhibitor) (Vaspin) (Visceral adipose-specific serpin)
Immunogen	Synthesized peptide derived from part region of human protein
Specificity	SPA12 Polyclonal Antibody detects endogenous levels of protein.
Formulation	Liquid in PBS containing 50% glycerol, and 0.02% sodium azide.
Source	Polyclonal, Rabbit,IgG
Purification	The antibody was affinity-purified from rabbit antiserum by affinity-chromatography using epitope-specific immunogen.
Dilution	WB 1:500-2000 ELISA 1:5000-20000
Concentration	1 mg/ml
Purity	≥90%
Storage Stability	-20°C/1 year
Synonyms	
Observed Band	45kD
Cell Pathway	Secreted .
Tissue Specificity	Expressed in visceral adipose tissues.
Function	function:May modulates insulin action conceivably only in the presence of its yet undefined target proteases in white adipose tissues.,similarity:Belongs to the serpin family.,tissue specificity:Expressed in visceral adipose tissues.,
Background	function:May modulates insulin action conceivably only in the presence of its yet undefined target proteases in white adipose tissues.,similarity:Belongs to the serpin family.,tissue specificity:Expressed in visceral adipose tissues.,
matters needing attention	Avoid repeated freezing and thawing!
Usage suggestions	This product can be used in immunological reaction related experiments. For more information, please consult technical personnel.



Products Images



Western blot analysis of lysates from KB cells, primary antibody was diluted at 1:1000, 4° over night