

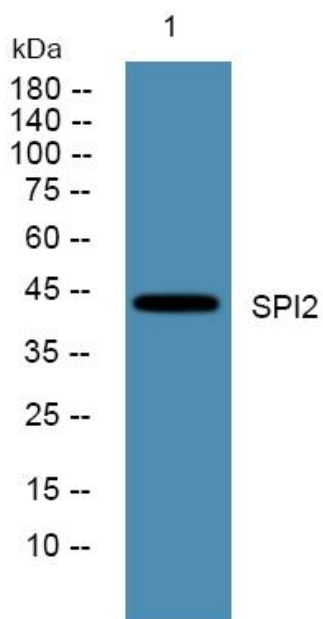


# SPI2 Polyclonal Antibody

<b>Catalog No</b>	YP-Ab-06160
<b>Isotype</b>	IgG
<b>Reactivity</b>	Human;Mouse
<b>Applications</b>	WB;ELISA
<b>Gene Name</b>	SERPINI2 MEPI PI14
<b>Protein Name</b>	Serpin I2 (Myoepithelium-derived serine protease inhibitor) (Pancpin) (Pancreas-specific protein TSA2004) (Peptidase inhibitor 14) (PI-14)
<b>Immunogen</b>	Synthesized peptide derived from part region of human protein
<b>Specificity</b>	SPI2 Polyclonal Antibody detects endogenous levels of protein.
<b>Formulation</b>	Liquid in PBS containing 50% glycerol, and 0.02% sodium azide.
<b>Source</b>	Polyclonal, Rabbit,IgG
<b>Purification</b>	The antibody was affinity-purified from rabbit antiserum by affinity-chromatography using epitope-specific immunogen.
<b>Dilution</b>	WB 1:500-2000 ELISA 1:5000-20000
<b>Concentration</b>	1 mg/ml
<b>Purity</b>	≥90%
<b>Storage Stability</b>	-20°C/1 year
<b>Synonyms</b>	
<b>Observed Band</b>	44kD
<b>Cell Pathway</b>	Secreted .
<b>Tissue Specificity</b>	Expressed in pancreas and adipose tissues.
<b>Function</b>	similarity:Belongs to the serpin family.,tissue specificity:Expressed in pancreas and adipose tissues.,
<b>Background</b>	The gene encodes a member of a family of proteins that acts as inhibitors of serine proteases. These proteins function in the regulation of a variety of physiological processes, including coagulation, fibrinolysis, development, malignancy, and inflammation. Expression of the encoded protein may be downregulated during pancreatic carcinogenesis. Alternative splicing results in multiple transcript variants for this gene. [provided by RefSeq, Jan 2013],
<b>matters needing attention</b>	Avoid repeated freezing and thawing!
<b>Usage suggestions</b>	This product can be used in immunological reaction related experiments. For more information, please consult technical personnel.



## Products Images



Western blot analysis of lysates from SW480 cells, primary antibody was diluted at 1:1000, 4° over night