

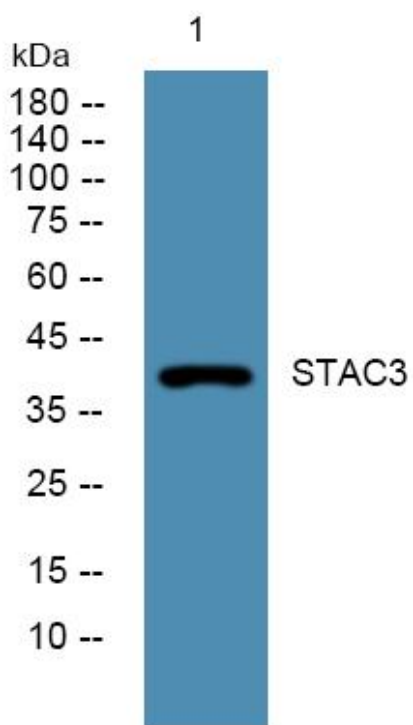


STAC3 Polyclonal Antibody

Catalog No	YP-Ab-06169
Isotype	IgG
Reactivity	Human;Mouse
Applications	WB;ELISA
Gene Name	STAC3
Protein Name	SH3 and cysteine-rich domain-containing protein 3
Immunogen	Synthesized peptide derived from part region of human protein
Specificity	STAC3 Polyclonal Antibody detects endogenous levels of protein.
Formulation	Liquid in PBS containing 50% glycerol, and 0.02% sodium azide.
Source	Polyclonal, Rabbit,IgG
Purification	The antibody was affinity-purified from rabbit antiserum by affinity-chromatography using epitope-specific immunogen.
Dilution	WB 1:500-2000 ELISA 1:5000-20000
Concentration	1 mg/ml
Purity	≥90%
Storage Stability	-20°C/1 year
Synonyms	
Observed Band	40kD
Cell Pathway	Cytoplasm . Cell membrane, sarcolemma ; Peripheral membrane protein ; Cytoplasmic side . Cell membrane, sarcolemma, T-tubule . Co-localizes with CACNA1S and CACNA1C on T-tubules. .
Tissue Specificity	Muscle,Skeletal muscle,
Function	similarity:Contains 1 phorbol-ester/DAG-type zinc finger.,similarity:Contains 2 SH3 domains.,
Background	The protein encoded by this gene is a component of the excitation-contraction coupling machinery of muscles. This protein is a member of the Stac gene family and contains an N-terminal cysteine-rich domain and two SH3 domains. Mutations in this gene are a cause of Native American myopathy. [provided by RefSeq, Nov 2013],
matters needing attention	Avoid repeated freezing and thawing!
Usage suggestions	This product can be used in immunological reaction related experiments. For more information, please consult technical personnel.



Products Images



Western blot analysis of lysates from Jarkat cells,
primary antibody was diluted at 1:1000, 4° over night