

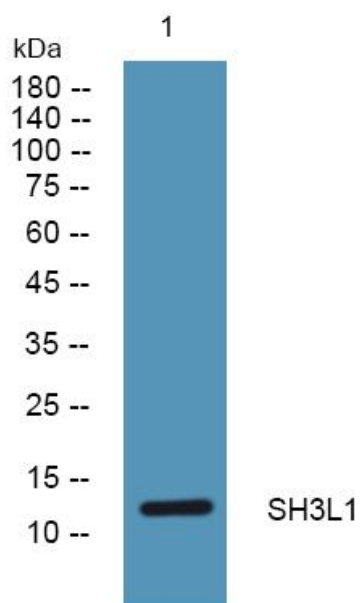


SH3L1 Polyclonal Antibody

Catalog No	YP-Ab-06173
Isotype	IgG
Reactivity	Human;Mouse
Applications	WB;ELISA
Gene Name	SH3BGRL
Protein Name	SH3 domain-binding glutamic acid-rich-like protein
Immunogen	Synthesized peptide derived from part region of human protein AA range: 1-50
Specificity	SH3L1 Polyclonal Antibody detects endogenous levels of protein.
Formulation	Liquid in PBS containing 50% glycerol, and 0.02% sodium azide.
Source	Polyclonal, Rabbit,IgG
Purification	The antibody was affinity-purified from rabbit antiserum by affinity-chromatography using epitope-specific immunogen.
Dilution	WB 1:500-2000 ELISA 1:5000-20000
Concentration	1 mg/ml
Purity	≥90%
Storage Stability	-20°C/1 year
Synonyms	
Observed Band	12kD
Cell Pathway	extracellular space,nucleus,cytoplasm,extracellular exosome,
Tissue Specificity	Ubiquitous.
Function	similarity:Belongs to the SH3BGR family.,tissue specificity:Ubiquitous.,
Background	similarity:Belongs to the SH3BGR family.,tissue specificity:Ubiquitous.,
matters needing attention	Avoid repeated freezing and thawing!
Usage suggestions	This product can be used in immunological reaction related experiments. For more information, please consult technical personnel.



Products Images



Western blot analysis of lysates from U2OS cells,
primary antibody was diluted at 1:1000, 4° over night