



# CCL16 Polyclonal Antibody

<b>Catalog No</b>	YP-Ab-06189
<b>Isotype</b>	IgG
<b>Reactivity</b>	Human;Rat;Mouse;
<b>Applications</b>	WB;ELISA
<b>Gene Name</b>	CCL16 ILINCK NCC4 SCYA16
<b>Protein Name</b>	C-C motif chemokine 16 (Chemokine CC-4) (HCC-4) (Chemokine LEC) (IL-10-inducible chemokine) (LCC-1) (Liver-expressed chemokine) (Lymphocyte and monocyte chemoattractant) (LMC) (Monotactin-1) (MTN-1) (
<b>Immunogen</b>	Synthesized peptide derived from human protein . at AA range: 10-90
<b>Specificity</b>	CCL16 Polyclonal Antibody detects endogenous levels of protein.
<b>Formulation</b>	Liquid in PBS containing 50% glycerol, and 0.02% sodium azide.
<b>Source</b>	Polyclonal, Rabbit,IgG
<b>Purification</b>	The antibody was affinity-purified from rabbit antiserum by affinity-chromatography using epitope-specific immunogen.
<b>Dilution</b>	WB 1:500-2000 ELISA 1:5000-20000
<b>Concentration</b>	1 mg/ml
<b>Purity</b>	≥90%
<b>Storage Stability</b>	-20°C/1 year
<b>Synonyms</b>	
<b>Observed Band</b>	13kD
<b>Cell Pathway</b>	Secreted.
<b>Tissue Specificity</b>	Mainly expressed in liver, also found in spleen and thymus. Highly expressed in LPS- and IFN-gamma-activated monocytes, weakly in some lymphocytes, including natural killer cells, gamma-delta T-cells, and some T-cell clones.
<b>Function</b>	function:Shows chemotactic activity for lymphocytes and monocytes but not neutrophils. Also shows potent myelosuppressive activity, suppresses proliferation of myeloid progenitor cells. Recombinant SCYA16 shows chemotactic activity for monocytes and THP-1 monocytes, but not for resting lymphocytes and neutrophils. Induces a calcium flux in THP-1 cells that were desensitized by prior expression to RANTES.,induction:By interleukin-10.,online information:CCL16 entry,similarity:Belongs to the intercrine beta (chemokine CC) family.,tissue specificity:Mainly expressed in liver, also found in spleen and thymus. Highly expressed in LPS- and IFN-gamma-activated monocytes, weakly in some lymphocytes, including natural killer cells, gamma-delta T-cells, and some T-cell clones.,
<b>Background</b>	This gene is one of several cytokine genes clustered on the q-arm of chromosome 17. Cytokines are a family of secreted proteins involved in



immunoregulatory and inflammatory processes. The CC cytokines are proteins characterized by two adjacent cysteines. The cytokine encoded by this gene displays chemotactic activity for lymphocytes and monocytes but not for neutrophils. This cytokine also shows a potent myelosuppressive activity and suppresses proliferation of myeloid progenitor cells. The expression of this gene is upregulated by IL-10. [provided by RefSeq, Jul 2008],

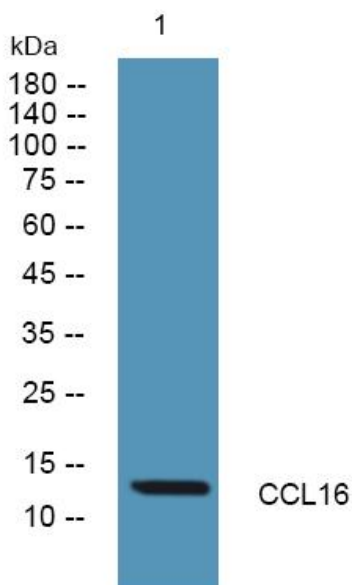
**matters needing attention**

Avoid repeated freezing and thawing!

**Usage suggestions**

This product can be used in immunological reaction related experiments. For more information, please consult technical personnel.

## Products Images



Western blot analysis of lysates from Jarkat cells, primary antibody was diluted at 1:1000, 4° over night