



# SL9C1 Polyclonal Antibody

<b>Catalog No</b>	YP-Ab-06207
<b>Isotype</b>	IgG
<b>Reactivity</b>	Human;Rat;Mouse;
<b>Applications</b>	WB;ELISA
<b>Gene Name</b>	SLC9C1 SLC9A10
<b>Protein Name</b>	Sodium/hydrogen exchanger 10 (Na <sup>+</sup> )/H <sup>+</sup> exchanger 10) (NHE-10) (Solute carrier family 9 member 10) (Solute carrier family 9 member C1) (Sperm-specific Na <sup>+</sup> /H <sup>+</sup> exchanger) (sNHE)
<b>Immunogen</b>	Synthesized peptide derived from part region of human protein
<b>Specificity</b>	SL9C1 Polyclonal Antibody detects endogenous levels of protein.
<b>Formulation</b>	Liquid in PBS containing 50% glycerol, and 0.02% sodium azide.
<b>Source</b>	Polyclonal, Rabbit,IgG
<b>Purification</b>	The antibody was affinity-purified from rabbit antiserum by affinity-chromatography using epitope-specific immunogen.
<b>Dilution</b>	WB 1:500-2000 ELISA 1:5000-20000
<b>Concentration</b>	1 mg/ml
<b>Purity</b>	≥90%
<b>Storage Stability</b>	-20°C/1 year
<b>Synonyms</b>	
<b>Observed Band</b>	129kD
<b>Cell Pathway</b>	Cell projection, cilium, flagellum membrane ; Multi-pass membrane protein .
<b>Tissue Specificity</b>	Testis,
<b>Function</b>	domain:The ion transport-like region is related to the membrane segments of voltage-gated ion channels. Its function is unknown.,function:Sperm-specific sodium/hydrogen exchanger involved in intracellular pH regulation of spermatozoa. Required for sperm motility and fertility. Involved in sperm cell hyperactivation, a step needed for sperm motility which is essential late in the preparation of sperm for fertilization. Required for the expression and bicarbonate regulation of the soluble adenylyl cyclase (sAC).,similarity:Belongs to the monovalent cation:proton antiporter 1 (CPA1) transporter (TC 2.A.36) family.,similarity:Contains 1 cyclic nucleotide-binding domain.,subunit:Interacts with soluble adenylyl cyclase (sAC).,
<b>Background</b>	SLC9A10 is a member of the sodium-hydrogen exchanger (NHE) family (see SLC9A1, MIM 107310) and is required for male fertility and sperm motility (Wang et al., 2003 [PubMed 14634667]).[supplied by OMIM, Apr 2009],



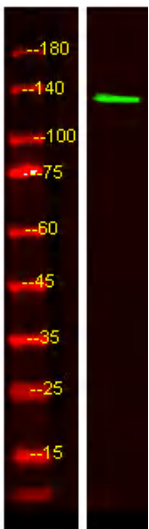
**matters needing attention**

Avoid repeated freezing and thawing!

**Usage suggestions**

This product can be used in immunological reaction related experiments. For more information, please consult technical personnel.

## Products Images



Western Blot analysis of HEK293 lysis, using primary antibody at 1:1000 dilution. Secondary antibody(catalog#:RS23920) was diluted at 1:10000