

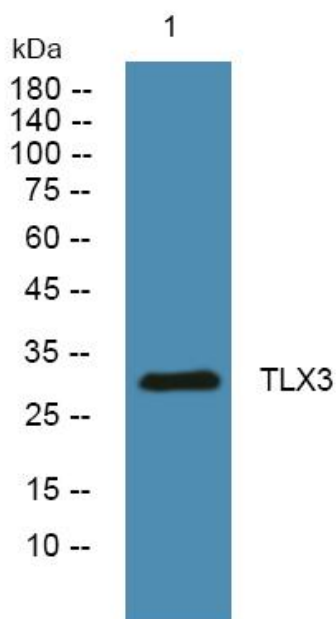


TLX3 Polyclonal Antibody

Catalog No	YP-Ab-06271
Isotype	IgG
Reactivity	Human;Mouse
Applications	WB;ELISA
Gene Name	TLX3 HOX11L2
Protein Name	T-cell leukemia homeobox protein 3 (Homeobox protein Hox-11L2)
Immunogen	Synthesized peptide derived from part region of human protein
Specificity	TLX3 Polyclonal Antibody detects endogenous levels of protein.
Formulation	Liquid in PBS containing 50% glycerol, and 0.02% sodium azide.
Source	Polyclonal, Rabbit,IgG
Purification	The antibody was affinity-purified from rabbit antiserum by affinity-chromatography using epitope-specific immunogen.
Dilution	WB 1:500-2000 ELISA 1:5000-20000
Concentration	1 mg/ml
Purity	≥90%
Storage Stability	-20°C/1 year
Synonyms	
Observed Band	32kD
Cell Pathway	Nucleus .
Tissue Specificity	Muscle,
Function	similarity:Contains 1 homeobox DNA-binding domain.,
Background	The protein encoded by this gene is an orphan homeobox protein that encodes a DNA-binding nuclear transcription factor. A translocation [t(5;14)(q35;q32)] involving this gene is associated with T-cell acute lymphoblastic leukemia (T-ALL) in children and young adults. [provided by RefSeq, Nov 2015],
matters needing attention	Avoid repeated freezing and thawing!
Usage suggestions	This product can be used in immunological reaction related experiments. For more information, please consult technical personnel.



Products Images



Western blot analysis of lysates from U2OS cells,
primary antibody was diluted at 1:1000, 4° over night