

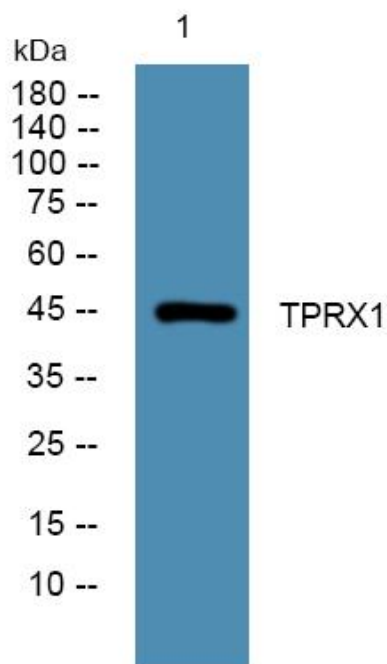


TPRX1 Polyclonal Antibody

Catalog No	YP-Ab-06275
Isotype	IgG
Reactivity	Human; Mouse;Rat
Applications	WB;ELISA
Gene Name	TPRX1
Protein Name	Tetra-peptide repeat homeobox protein 1
Immunogen	Synthesized peptide derived from part region of human protein
Specificity	TPRX1 Polyclonal Antibody detects endogenous levels of protein.
Formulation	Liquid in PBS containing 50% glycerol, and 0.02% sodium azide.
Source	Polyclonal, Rabbit,IgG
Purification	The antibody was affinity-purified from rabbit antiserum by affinity-chromatography using epitope-specific immunogen.
Dilution	WB 1:500-2000 ELISA 1:5000-20000
Concentration	1 mg/ml
Purity	≥90%
Storage Stability	-20°C/1 year
Synonyms	
Observed Band	45kD
Cell Pathway	Nucleus .
Tissue Specificity	Testis,
Function	similarity:Contains 1 homeobox DNA-binding domain.,
Background	Homeobox genes encode DNA-binding proteins, many of which are thought to be involved in early embryonic development. Homeobox genes encode a DNA-binding domain of 60 to 63 amino acids referred to as the homeodomain. This gene is a member of the TPRX homeobox gene family. [provided by RefSeq, Jul 2008],
matters needing attention	Avoid repeated freezing and thawing!
Usage suggestions	This product can be used in immunological reaction related experiments. For more information, please consult technical personnel.



Products Images



Western blot analysis of lysates from PC12 cells,
primary antibody was diluted at 1:1000, 4° over night