



# ZO3 Polyclonal Antibody

<b>Catalog No</b>	YP-Ab-06281
<b>Isotype</b>	IgG
<b>Reactivity</b>	Human;Mouse;Monkey
<b>Applications</b>	WB;ELISA
<b>Gene Name</b>	TJP3 ZO3
<b>Protein Name</b>	Tight junction protein ZO-3 (Tight junction protein 3) (Zona occludens protein 3) (Zonula occludens protein 3)
<b>Immunogen</b>	Synthesized peptide derived from part region of human protein
<b>Specificity</b>	ZO3 Polyclonal Antibody detects endogenous levels of protein.
<b>Formulation</b>	Liquid in PBS containing 50% glycerol, and 0.02% sodium azide.
<b>Source</b>	Polyclonal, Rabbit,IgG
<b>Purification</b>	The antibody was affinity-purified from rabbit antiserum by affinity-chromatography using epitope-specific immunogen.
<b>Dilution</b>	WB 1:500-2000 ELISA 1:5000-20000
<b>Concentration</b>	1 mg/ml
<b>Purity</b>	≥90%
<b>Storage Stability</b>	-20°C/1 year
<b>Synonyms</b>	
<b>Observed Band</b>	102kD
<b>Cell Pathway</b>	Cell membrane ; Peripheral membrane protein ; Cytoplasmic side . Cell junction, tight junction . Nucleus . Exhibits predominant nuclear expression in proliferating cells but is exclusively junctionally expressed after confluence is reached (PubMed:23608536). Shows an epithelial-specific tight junction localization in a TJP1/TJP2-dependent fashion (By similarity). .
<b>Tissue Specificity</b>	PCR rescued clones,Whole embryo,
<b>Function</b>	similarity:Belongs to the MAGUK family.,similarity:Contains 1 guanylate kinase-like domain.,similarity:Contains 1 PDZ (DHR) domain.,similarity:Contains 1 SH3 domain.,similarity:Contains 3 PDZ (DHR) domains.,subunit:Interacts with occludin, claudins and ZO-1. Interacts with INADL (By similarity). Interacts with UBN1.,
<b>Background</b>	The protein encoded by this gene is a member of the membrane-associated guanylate kinase-like (MAGUK) protein family which is characterized by members having multiple PDZ domains, a single SH3 domain, and a single guanylate kinase-like (GUK)-domain. In addition, members of the zonula occludens protein subfamily have an acidic domain, a basic arginine-rich region, and a proline-rich domain. The protein encoded by this gene plays a role in the linkage between the actin cytoskeleton and tight-junctions and also sequesters cyclin D1 at tight



junctions during mitosis. Alternative splicing results in multiple transcript variants encoding distinct isoforms. This gene has a partial pseudogene on chromosome 1. [provided by RefSeq, May 2012],

**matters needing attention**

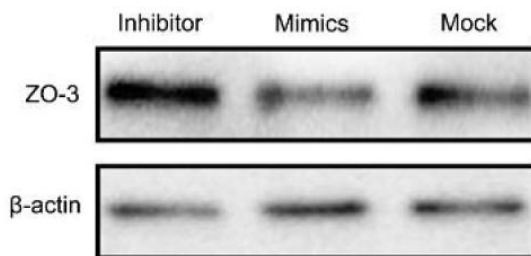
Avoid repeated freezing and thawing!

**Usage suggestions**

This product can be used in immunological reaction related experiments. For more information, please consult technical personnel.

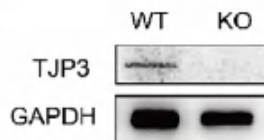
**Products Images**

**A**



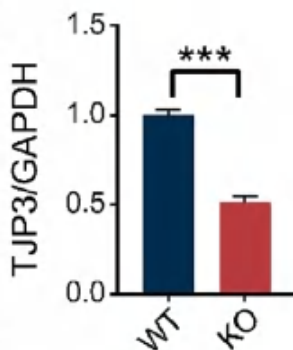
Exosomal miRNA-328-3p targets ZO-3 and inhibits porcine epidemic diarrhea virus proliferation Arch Virol. 2022 Mar;167(3):901-910. WB Monkey

**C**



Dietary fish oil improves autistic behaviors and gut homeostasis by altering the gut microbial composition in a mouse model of fragile X syndrome BRAIN BEHAVIOR AND IMMUNITY Peifeng Guo, Xinyu Yang, Xiaomeng Guo, Huaien Yang, Jiao Pan, Yue Li WB Mouse colon

**D**



**F**