



TM2D1 Polyclonal Antibody

Catalog No	YP-Ab-06283
Isotype	IgG
Reactivity	Human;Mouse
Applications	WB;ELISA
Gene Name	TM2D1 BBP
Protein Name	TM2 domain-containing protein 1 (Beta-amyloid-binding protein) (hBBP)
Immunogen	Synthesized peptide derived from part region of human protein
Specificity	TM2D1 Polyclonal Antibody detects endogenous levels of protein.
Formulation	Liquid in PBS containing 50% glycerol, and 0.02% sodium azide.
Source	Polyclonal, Rabbit,IgG
Purification	The antibody was affinity-purified from rabbit antiserum by affinity-chromatography using epitope-specific immunogen.
Dilution	WB 1:500-2000 ELISA 1:5000-20000
Concentration	1 mg/ml
Purity	≥90%
Storage Stability	-20°C/1 year
Synonyms	
Observed Band	22kD
Cell Pathway	Membrane ; Multi-pass membrane protein .
Tissue Specificity	Widely expressed.
Function	caution:Was initially thought (PubMed:11278849) to modulate beta-amyloid toxicity by coupling to G protein. However, PubMed:12836168 showed that this effect is not direct.,function:May participate to beta-amyloid-induced apoptosis via its interaction with beta-APP42.,PTM:N-glycosylated.,similarity:Belongs to the TM2 family.,subunit:Interacts with beta-APP42 (beta-amyloid protein 42) peptide of APP.,tissue specificity:Widely expressed.,
Background	The protein encoded by this gene is a beta-amyloid peptide-binding protein. It contains a structural module related to that of the seven transmembrane domain G protein-coupled receptor superfamily and known to be important in heterotrimeric G protein activation. Beta-amyloid peptide has been established to be a causative factor in neuron death and the consequent diminution of cognitive abilities observed in Alzheimer's disease. This protein may be a target of neurotoxic beta-amyloid peptide, and may mediate cellular vulnerability to beta-amyloid peptide toxicity through a G protein-regulated program of cell death. Several transcript variants have been found for this gene. [provided by RefSeq,



Feb 2016],

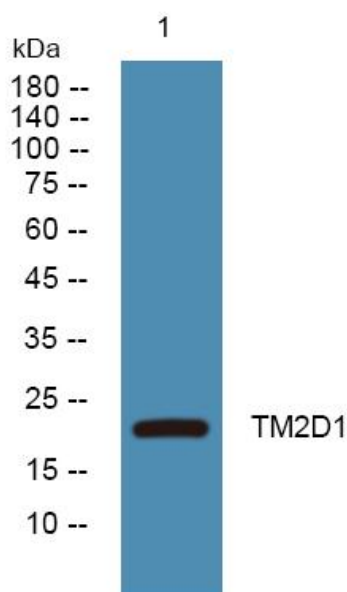
matters needing attention

Avoid repeated freezing and thawing!

Usage suggestions

This product can be used in immunological reaction related experiments. For more information, please consult technical personnel.

Products Images



Western blot analysis of lysates from SW480 cells, primary antibody was diluted at 1:1000, 4° over night