

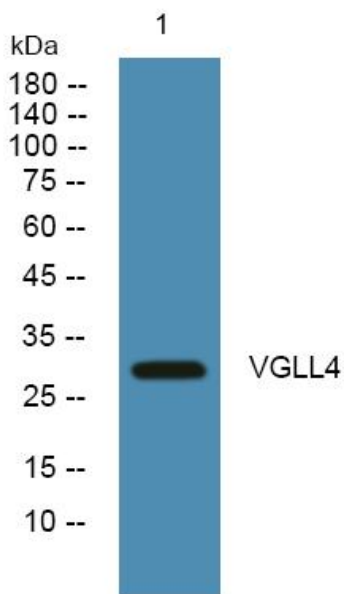


VGLL4 Polyclonal Antibody

Catalog No	YP-Ab-06290
Isotype	IgG
Reactivity	Human;Mouse
Applications	WB;ELISA
Gene Name	VGLL4 KIAA0121
Protein Name	Transcription cofactor vestigial-like protein 4 (Vgl-4)
Immunogen	Synthesized peptide derived from part region of human protein
Specificity	VGLL4 Polyclonal Antibody detects endogenous levels of protein.
Formulation	Liquid in PBS containing 50% glycerol, and 0.02% sodium azide.
Source	Polyclonal, Rabbit,IgG
Purification	The antibody was affinity-purified from rabbit antiserum by affinity-chromatography using epitope-specific immunogen.
Dilution	WB 1:500-2000 ELISA 1:5000-20000
Concentration	1 mg/ml
Purity	≥90%
Storage Stability	-20°C/1 year
Synonyms	
Observed Band	31kD
Cell Pathway	Nucleus .
Tissue Specificity	Bone marrow,Lung,Placenta,Salivary gland,
Function	function:May act as a specific coactivator for the mammalian TEFs.,similarity:Belongs to the vestigial family.,subunit:Interacts with TEFs.,
Background	function:May act as a specific coactivator for the mammalian TEFs.,similarity:Belongs to the vestigial family.,subunit:Interacts with TEFs.,
matters needing attention	Avoid repeated freezing and thawing!
Usage suggestions	This product can be used in immunological reaction related experiments. For more information, please consult technical personnel.



Products Images



Western blot analysis of lysates from KB cells, primary antibody was diluted at 1:1000, 4° over night