

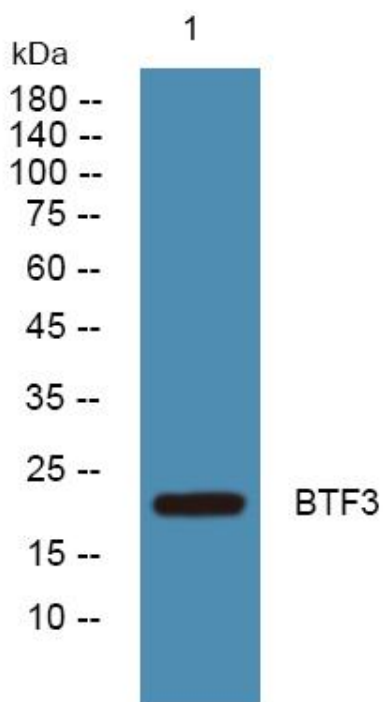


BTF3 Polyclonal Antibody

| | |
|----------------------------------|---|
| Catalog No | YP-Ab-06298 |
| Isotype | IgG |
| Reactivity | Human;Mouse |
| Applications | WB;ELISA |
| Gene Name | BTF3 NACB OK/SW-cl.8 |
| Protein Name | Transcription factor BTF3 (RNA polymerase B transcription factor 3) |
| Immunogen | Synthesized peptide derived from human protein . at AA range: 120-200 |
| Specificity | BTF3 Polyclonal Antibody detects endogenous levels of protein. |
| Formulation | Liquid in PBS containing 50% glycerol, and 0.02% sodium azide. |
| Source | Polyclonal, Rabbit,IgG |
| Purification | The antibody was affinity-purified from rabbit antiserum by affinity-chromatography using epitope-specific immunogen. |
| Dilution | WB 1:500-2000 ELISA 1:5000-20000 |
| Concentration | 1 mg/ml |
| Purity | ≥90% |
| Storage Stability | -20°C/1 year |
| Synonyms | |
| Observed Band | 22kD |
| Cell Pathway | Cytoplasm . Nucleus . The heterodimer with NACA is cytoplasmic. |
| Tissue Specificity | Colon adenocarcinoma,Leukocyte,Skin, |
| Function | function:General transcription factor. BTF3 can form a stable complex with RNA polymerase II. Required for the initiation of transcription.,PTM:Phosphorylated upon DNA damage, probably by ATM or ATR.,similarity:Belongs to the NAC-beta family.,similarity:Contains 1 NAC-A/B (NAC-alpha/beta) domain., |
| Background | This gene encodes the basic transcription factor 3. This protein forms a stable complex with RNA polymerase IIB and is required for transcriptional initiation. Alternative splicing results in multiple transcript variants encoding different isoforms. This gene has multiple pseudogenes. [provided by RefSeq, Jul 2008], |
| matters needing attention | Avoid repeated freezing and thawing! |
| Usage suggestions | This product can be used in immunological reaction related experiments. For more information, please consult technical personnel. |



Products Images



Western blot analysis of lysates from A431 cells,
primary antibody was diluted at 1:1000, 4° over night