



# OVOL2 Polyclonal Antibody

<b>Catalog No</b>	YP-Ab-06301
<b>Isotype</b>	IgG
<b>Reactivity</b>	Human;Mouse
<b>Applications</b>	WB;ELISA
<b>Gene Name</b>	OVOL2 ZNF339
<b>Protein Name</b>	Transcription factor Ovo-like 2 (hOvo2) (Zinc finger protein 339)
<b>Immunogen</b>	Synthesized peptide derived from human protein . at AA range: 90-170
<b>Specificity</b>	OVOL2 Polyclonal Antibody detects endogenous levels of protein.
<b>Formulation</b>	Liquid in PBS containing 50% glycerol, and 0.02% sodium azide.
<b>Source</b>	Polyclonal, Rabbit,IgG
<b>Purification</b>	The antibody was affinity-purified from rabbit antiserum by affinity-chromatography using epitope-specific immunogen.
<b>Dilution</b>	WB 1:500-2000 ELISA 1:5000-20000
<b>Concentration</b>	1 mg/ml
<b>Purity</b>	≥90%
<b>Storage Stability</b>	-20°C/1 year
<b>Synonyms</b>	
<b>Observed Band</b>	30kD
<b>Cell Pathway</b>	Nucleus .
<b>Tissue Specificity</b>	Expressed in testis, ovary, heart and skeletal muscle (PubMed:12213202). Expressed in the cornea, but absent from the corneal endothelium (PubMed:26749309).
<b>Function</b>	function:DNA-binding protein that binds to the 5'-G[GCT]GGGGG-3' core sequence. Probably acts as a transcription regulator.,similarity:Belongs to the krueppel C2H2-type zinc-finger protein family.,similarity:Contains 4 C2H2-type zinc fingers.,
<b>Background</b>	This gene encodes a member of the evolutionarily conserved ovo-like protein family. Mammalian members of this family contain a single zinc finger domain composed of a tetrad of C2H2 zinc fingers with variable N- and C-terminal extensions that contain intrinsically disordered domains. Members of this family are involved in epithelial development and differentiation. Knockout of this gene in mouse results in early embryonic lethality with phenotypes that include neurectoderm expansion, impaired vascularization, and heart anomalies. In humans, allelic variants of this gene have been associated with posterior polymorphous corneal dystrophy. [provided by RefSeq, Apr 2016],



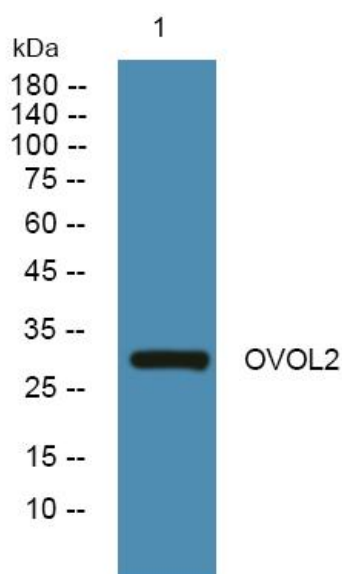
**matters needing attention**

Avoid repeated freezing and thawing!

**Usage suggestions**

This product can be used in immunological reaction related experiments. For more information, please consult technical personnel.

**Products Images**



Western blot analysis of lysates from K562 cells, primary antibody was diluted at 1:1000, 4° over night