



# TNNC2 Polyclonal Antibody

|                           |   |
|---------------------------|---|
| <b>Catalog No</b>         | YP-Ab-06322   |
| <b>Isotype</b>            | IgG   |
| <b>Reactivity</b>         | Human;Mouse   |
| <b>Applications</b>       | WB;ELISA  |
| <b>Gene Name</b>          | TNNC2   |
| <b>Protein Name</b>       | Troponin C, skeletal muscle   |
| <b>Immunogen</b>          | Synthesized peptide derived from part region of human protein   |
| <b>Specificity</b>        | TNNC2 Polyclonal Antibody detects endogenous levels of protein.   |
| <b>Formulation</b>        | Liquid in PBS containing 50% glycerol, and 0.02% sodium azide.  |
| <b>Source</b>             | Polyclonal, Rabbit,IgG  |
| <b>Purification</b>       | The antibody was affinity-purified from rabbit antiserum by affinity-chromatography using epitope-specific immunogen.   |
| <b>Dilution</b>           | WB 1:500-2000 ELISA 1:5000-20000  |
| <b>Concentration</b>      | 1 mg/ml   |
| <b>Purity</b>             | ≥90%  |
| <b>Storage Stability</b>  | -20°C/1 year  |
| <b>Synonyms</b>           |   |
| <b>Observed Band</b>      | 17kD  |
| <b>Cell Pathway</b>       | cytosol,troponin complex,   |
| <b>Tissue Specificity</b> | Liver,Muscle,Skeletal muscle,Tongue,  |
| <b>Function</b>           | function:Troponin is the central regulatory protein of striated muscle contraction. Tn consists of three components: Tn-I which is the inhibitor of actomyosin ATPase, Tn-T which contains the binding site for tropomyosin and Tn-C. The binding of calcium to Tn-C abolishes the inhibitory action of Tn on actin filaments.,miscellaneous:Skeletal muscle troponin C binds four calcium ions.,similarity:Belongs to the troponin C family.,similarity:Contains 4 EF-hand domains., |
| <b>Background</b>         | Troponin (Tn), a key protein complex in the regulation of striated muscle contraction, is composed of 3 subunits. The Tn-I subunit inhibits actomyosin ATPase, the Tn-T subunit binds tropomyosin and Tn-C, while the Tn-C subunit binds calcium and overcomes the inhibitory action of the troponin complex on actin filaments. The protein encoded by this gene is the Tn-C subunit. [provided by RefSeq, Jul 2008],  |



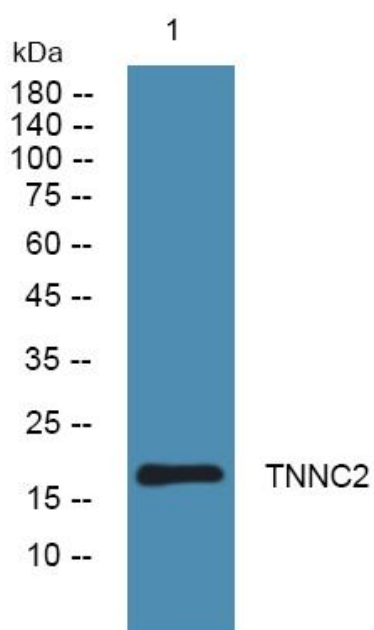
**matters needing attention**

Avoid repeated freezing and thawing!

**Usage suggestions**

This product can be used in immunological reaction related experiments. For more information, please consult technical personnel.

**Products Images**



Western blot analysis of lysates from K562 cells, primary antibody was diluted at 1:1000, 4°over night