



UB2L6 Polyclonal Antibody

Catalog No	YP-Ab-06352
Isotype	IgG
Reactivity	Human;Rat;Mouse
Applications	WB;ELISA
Gene Name	UBE2L6 UBCH8
Protein Name	Ubiquitin/ISG15-conjugating enzyme E2 L6 (EC 6.3.2.19) (Retinoic acid-induced gene B protein) (RIG-B) (UbcH8) (Ubiquitin carrier protein L6) (Ubiquitin-protein ligase L6)
Immunogen	Synthesized peptide derived from part region of human protein
Specificity	UB2L6 Polyclonal Antibody detects endogenous levels of protein.
Formulation	Liquid in PBS containing 50% glycerol, and 0.02% sodium azide.
Source	Polyclonal, Rabbit,IgG
Purification	The antibody was affinity-purified from rabbit antiserum by affinity-chromatography using epitope-specific immunogen.
Dilution	WB 1:500-2000 ELISA 1:5000-20000
Concentration	1 mg/ml
Purity	≥90%
Storage Stability	-20°C/1 year
Synonyms	
Observed Band	16kD
Cell Pathway	nucleoplasm,cytosol,
Tissue Specificity	Present in natural killer cells (at protein level).
Function	catalytic activity:ATP + ubiquitin + protein lysine = AMP + diphosphate + protein N-ubiquityllysine.,function:Catalyzes the covalent attachment of ubiquitin or ISG15 to other proteins. Functions in the E6/E6-AP-induced ubiquitination of p53/TP53.,induction:By interferon beta.,pathway:Protein modification; protein ubiquitination.,similarity:Belongs to the ubiquitin-conjugating enzyme family.,subunit:Interacts with RNF19A, RNF19B and RNF144B.,tissue specificity:Present in natural killer cells (at protein level).,
Background	The modification of proteins with ubiquitin is an important cellular mechanism for targeting abnormal or short-lived proteins for degradation. Ubiquitination involves at least three classes of enzymes: ubiquitin-activating enzymes (E1s), ubiquitin-conjugating enzymes (E2s) and ubiquitin-protein ligases (E3s). This gene encodes a member of the E2 ubiquitin-conjugating enzyme family. This enzyme is highly similar in primary structure to the enzyme encoded by the UBE2L3 gene. Two alternatively spliced transcript variants encoding distinct



isoforms have been found for this gene. [provided by RefSeq, May 2011],

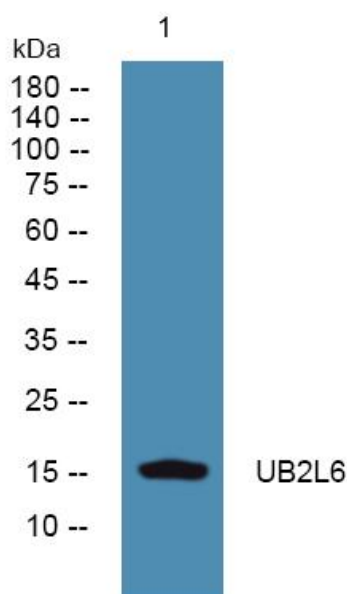
matters needing attention

Avoid repeated freezing and thawing!

Usage suggestions

This product can be used in immunological reaction related experiments. For more information, please consult technical personnel.

Products Images



Western blot analysis of lysates from Jarkat cells, primary antibody was diluted at 1:1000, 4° over night