



# UB2Q2 Polyclonal Antibody

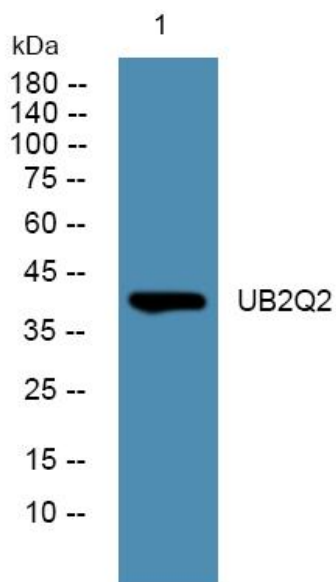
<b>Catalog No</b>	YP-Ab-06366
<b>Isotype</b>	IgG
<b>Reactivity</b>	Human;Mouse
<b>Applications</b>	WB;ELISA
<b>Gene Name</b>	UBE2Q2
<b>Protein Name</b>	Ubiquitin-conjugating enzyme E2 Q2 (EC 6.3.2.19) (Ubiquitin carrier protein Q2) (Ubiquitin-protein ligase Q2)
<b>Immunogen</b>	Synthesized peptide derived from part region of human protein
<b>Specificity</b>	UB2Q2 Polyclonal Antibody detects endogenous levels of protein.
<b>Formulation</b>	Liquid in PBS containing 50% glycerol, and 0.02% sodium azide.
<b>Source</b>	Polyclonal, Rabbit,IgG
<b>Purification</b>	The antibody was affinity-purified from rabbit antiserum by affinity-chromatography using epitope-specific immunogen.
<b>Dilution</b>	WB 1:500-2000 ELISA 1:5000-20000
<b>Concentration</b>	1 mg/ml
<b>Purity</b>	≥90%
<b>Storage Stability</b>	-20°C/1 year
<b>Synonyms</b>	
<b>Observed Band</b>	41kD
<b>Cell Pathway</b>	Cytoplasm .
<b>Tissue Specificity</b>	Detected in hypopharyngeal head and neck squamous cell carcinoma, in tumor masses and invasive epithelium.
<b>Function</b>	catalytic activity:ATP + ubiquitin + protein lysine = AMP + diphosphate + protein N-ubiquityllysine.,function:Catalyzes the covalent attachment of ubiquitin to other proteins.,pathway:Protein modification; protein ubiquitination.,similarity:Belongs to the ubiquitin-conjugating enzyme family.,tissue specificity:Detected in hypopharyngeal head and neck squamous cell carcinoma, in tumor masses and invasive epithelium.,
<b>Background</b>	catalytic activity:ATP + ubiquitin + protein lysine = AMP + diphosphate + protein N-ubiquityllysine.,function:Catalyzes the covalent attachment of ubiquitin to other proteins.,pathway:Protein modification; protein ubiquitination.,similarity:Belongs to the ubiquitin-conjugating enzyme family.,tissue specificity:Detected in hypopharyngeal head and neck squamous cell carcinoma, in tumor masses and invasive epithelium.,
<b>matters needing attention</b>	Avoid repeated freezing and thawing!



**Usage suggestions**

This product can be used in immunological reaction related experiments. For more information, please consult technical personnel.

**Products Images**



Western blot analysis of lysates from U2OS cells, primary antibody was diluted at 1:1000, 4° over night