



SEC20 Polyclonal Antibody

Catalog No	YP-Ab-06391
Isotype	IgG
Reactivity	Human;Rat;Mouse
Applications	WB;ELISA
Gene Name	BNIP1 NIP1 SEC20L TRG8
Protein Name	Vesicle transport protein SEC20 (BCL2/adenovirus E1B 19 kDa protein-interacting protein 1) (Transformation-related gene 8 protein) (TRG-8)
Immunogen	Synthesized peptide derived from part region of human protein
Specificity	SEC20 Polyclonal Antibody detects endogenous levels of protein.
Formulation	Liquid in PBS containing 50% glycerol, and 0.02% sodium azide.
Source	Polyclonal, Rabbit,IgG
Purification	The antibody was affinity-purified from rabbit antiserum by affinity-chromatography using epitope-specific immunogen.
Dilution	WB 1:500-2000 ELISA 1:5000-20000
Concentration	1 mg/ml
Purity	≥90%
Storage Stability	-20°C/1 year
Synonyms	
Observed Band	25kD
Cell Pathway	Endoplasmic reticulum membrane ; Single-pass type IV membrane protein . Mitochondrion membrane ; Single-pass type IV membrane protein . Localization to the mitochondrion is regulated by RNF186. .
Tissue Specificity	Isoform 1 is highly expressed in heart, brain, liver skeletal muscle and pancreas. Isoform 3 is moderately expressed in placenta, lung and kidney. Isoform 4 is highly expressed in testis and small intestine.
Function	alternative products:Additional isoforms seem to exist,function:SNARE that may be involved in targeting and fusion of Golgi-derived retrograde transport vesicles with the ER. Required for maintenance of ER network. Implicated in the suppression of cell death.,miscellaneous:Silencing of BNIP1 disrupts ER morphology.,similarity:Belongs to the SEC20 family.,subunit:Component of a SNARE complex consisting of STX18, USE1L, BNIP1/SEC20L and SEC22B. Interacts directly with STX18, RINT1/TIP20L and NAPA. Interacts with ZW10 through RINT1. Interacts with BCL2 and adenovirus E1B 19 kDa protein.,tissue specificity:High levels of isoform 1 in heart, brain, liver skeletal muscle and pancreas. Moderate levels of isoform 3 in placenta, lung and kidney. High levels of isoform 4 in testis and small intestine.,

**Background**

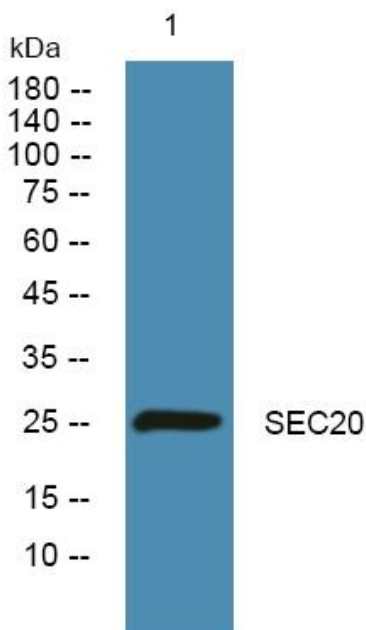
This gene is a member of the BCL2/adenovirus E1B 19 kd-interacting protein (BNIP) family. It interacts with the E1B 19 kDa protein, which protects cells from virally-induced cell death. The encoded protein also interacts with E1B 19 kDa-like sequences of BCL2, another apoptotic protector. In addition, this protein is involved in vesicle transport into the endoplasmic reticulum. Alternative splicing of this gene results in four protein products with identical N- and C-termini. [provided by RefSeq, Mar 2011],

matters needing attention

Avoid repeated freezing and thawing!

Usage suggestions

This product can be used in immunological reaction related experiments. For more information, please consult technical personnel.

Products Images

Western blot analysis of lysates from Jarkat cells, primary antibody was diluted at 1:1000, 4° over night