

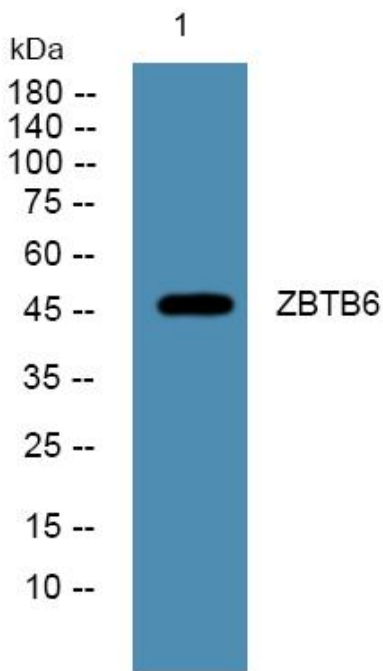


# ZBTB6 Polyclonal Antibody

<b>Catalog No</b>	YP-Ab-06405
<b>Isotype</b>	IgG
<b>Reactivity</b>	Human;Mouse
<b>Applications</b>	WB;ELISA
<b>Gene Name</b>	ZBTB6 ZID ZNF482
<b>Protein Name</b>	Zinc finger and BTB domain-containing protein 6 (Zinc finger protein 482) (Zinc finger protein with interaction domain)
<b>Immunogen</b>	Synthesized peptide derived from part region of human protein
<b>Specificity</b>	ZBTB6 Polyclonal Antibody detects endogenous levels of protein.
<b>Formulation</b>	Liquid in PBS containing 50% glycerol, and 0.02% sodium azide.
<b>Source</b>	Polyclonal, Rabbit,IgG
<b>Purification</b>	The antibody was affinity-purified from rabbit antiserum by affinity-chromatography using epitope-specific immunogen.
<b>Dilution</b>	WB 1:500-2000 ELISA 1:5000-20000
<b>Concentration</b>	1 mg/ml
<b>Purity</b>	≥90%
<b>Storage Stability</b>	-20°C/1 year
<b>Synonyms</b>	
<b>Observed Band</b>	46kD
<b>Cell Pathway</b>	Nucleus .
<b>Tissue Specificity</b>	Widely expressed with highest levels in brain.
<b>Function</b>	function:May be involved in transcriptional regulation.,similarity:Contains 1 BTB (POZ) domain.,similarity:Contains 4 C2H2-type zinc fingers.,tissue specificity:Widely expressed with highest levels in brain.,
<b>Background</b>	function:May be involved in transcriptional regulation.,similarity:Contains 1 BTB (POZ) domain.,similarity:Contains 4 C2H2-type zinc fingers.,tissue specificity:Widely expressed with highest levels in brain.,
<b>matters needing attention</b>	Avoid repeated freezing and thawing!
<b>Usage suggestions</b>	This product can be used in immunological reaction related experiments. For more information, please consult technical personnel.



## Products Images



Western blot analysis of lysates from K562 cells,  
primary antibody was diluted at 1:1000, 4° over night