



CCNG2 Polyclonal Antibody

Catalog No	YP-Ab-06430
Isotype	IgG
Reactivity	Human;Mouse
Applications	WB;ELISA
Gene Name	CCNG2
Protein Name	Cyclin-G2
Immunogen	Synthesized peptide derived from human protein . at AA range: 20-100
Specificity	CCNG2 Polyclonal Antibody detects endogenous levels of protein.
Formulation	Liquid in PBS containing 50% glycerol, and 0.02% sodium azide.
Source	Polyclonal, Rabbit,IgG
Purification	The antibody was affinity-purified from rabbit antiserum by affinity-chromatography using epitope-specific immunogen.
Dilution	WB 1:500-2000 ELISA 1:5000-20000
Concentration	1 mg/ml
Purity	≥90%
Storage Stability	-20°C/1 year
Synonyms	
Observed Band	37kD
Cell Pathway	Cytoplasm .
Tissue Specificity	High levels in cerebellum, thymus, spleen and prostate. Low levels in skeletal muscle.
Function	developmental stage:Expression levels increase through the cell cycle to peak in the mid/late-S phase and decrease during G2/M phase.,function:May play a role in growth regulation and in negative regulation of cell cycle progression.,induction:Activated by actinomycin-D induced DNA damage.,similarity:Belongs to the cyclin family.,similarity:Belongs to the cyclin family. Cyclin G subfamily.,tissue specificity:High levels in cerebellum, thymus, spleen and prostate. Low levels in skeletal muscle.,
Background	The eukaryotic cell cycle is governed by cyclin-dependent protein kinases (CDKs) whose activities are regulated by cyclins and CDK inhibitors. The 8 species of cyclins reported in mammals, cyclins A through H, share a conserved amino acid sequence of about 90 residues called the cyclin box. The amino acid sequence of cyclin G is well conserved among mammals. The nucleotide sequence of cyclin G1 and cyclin G2 are 53% identical. Unlike cyclin G1, cyclin G2 contains a C-terminal PEST protein destabilization motif, suggesting that cyclin G2 expression is tightly regulated through the cell cycle. [provided by



RefSeq, Jul 2008],

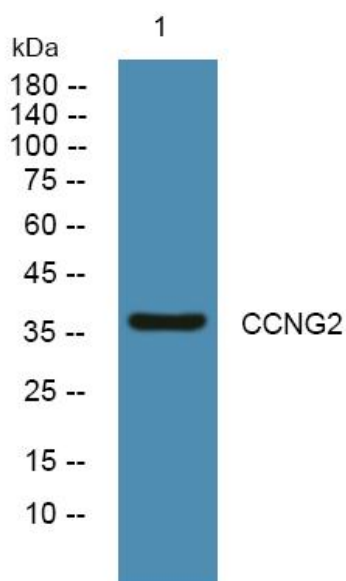
matters needing attention

Avoid repeated freezing and thawing!

Usage suggestions

This product can be used in immunological reaction related experiments. For more information, please consult technical personnel.

Products Images



Western blot analysis of lysates from KB cells, primary antibody was diluted at 1:1000, 4° over night